

Sports

SPORTS@CHARLEVOIXCOUNTYNEWS.COM

Charlevoix **County News**

Section B

Thursday, November 27, 2019

CALL (989) 732-8160

FAX (888) 854-7441

2019 Charlevoix County News ALL-AREA FOOTBALL TEAM



MORE PHOTOS ON PAGE 2B

2019 Charlevoix County News' All-Area Football team.

Back (L-R) Jackson Raymond, EJ; Pete Calcaterra, BC; Luke Stuck, CHX; Cooper Stevenson, EJ; Max Vondra, BC; Cole Wright, CHX; Zander Johncheck, EJ; Nick Aown, BC; and Luke Snyder, CHX.
Front (L-R) Alan Ritter, CHX; Brahmin Ager, BC; Jake Snyder, CHX; Chandler Bartig, EJ; Phong Nguyen, BC; Dimitrii Bell, CHX; Levi Pepin, EJ; and Bobby Hoth, BC. (Photo by Chris Fiel)

EARNING COACH OF THE YEAR HONORS FOR THE COUNTY NEWS ALL-AREA TEAM IS CHARLEVOIX'S

DON JESS

After a brief hiatus from coaching, Charlevoix native Don Jess returned to the sideline and in his second stint as the head coach of the Rayders, he led them back to the post-season and helped lead them to their first ever playoff victory, earning him Coach of the Year honors.

Led by the direction of Jess and his coaching staff, Charlevoix was the top team in the area this year, while Boyne City and East Jordan both put together solid late season runs, pointing them in the right direction for next season.

EARNING PLAYER OF THE YEAR HONORS FOR THE COUNTY NEWS ALL-AREA TEAM IS CHARLEVOIX'S

COLE WRIGHT

Wright was a do-it-all player from the quarterback position for the Rayders. His signal calling would help lead the team to a 7-4 record.

Along the way, Wright would pass 76-of-147 for 783 yards, including five touchdowns and six two-point conversions.

He also gained 896 yards on the ground on 186 carries and scored 17 touchdowns and added four two-point conversions.

On defense, he made 27 tackles, deflected three passes

Continued on Page 3B



989.448.8700

WWW.NORTHERNMICHIGANRV.COM



2020 Palomino Backpack HS-8801 Truck Camper

This truck camper is designed to a 3/4 TON Truck with either a 6'6" or 8' bed. Wet bath, full kitchen with triple burner range, oven, double basin sink, frig.

Sale Price \$19,995

Used 2002 Shadow Cruiser T-139 Travel Trailer

Small and light-weight!! SUV towable.

Clearance Price \$3,995



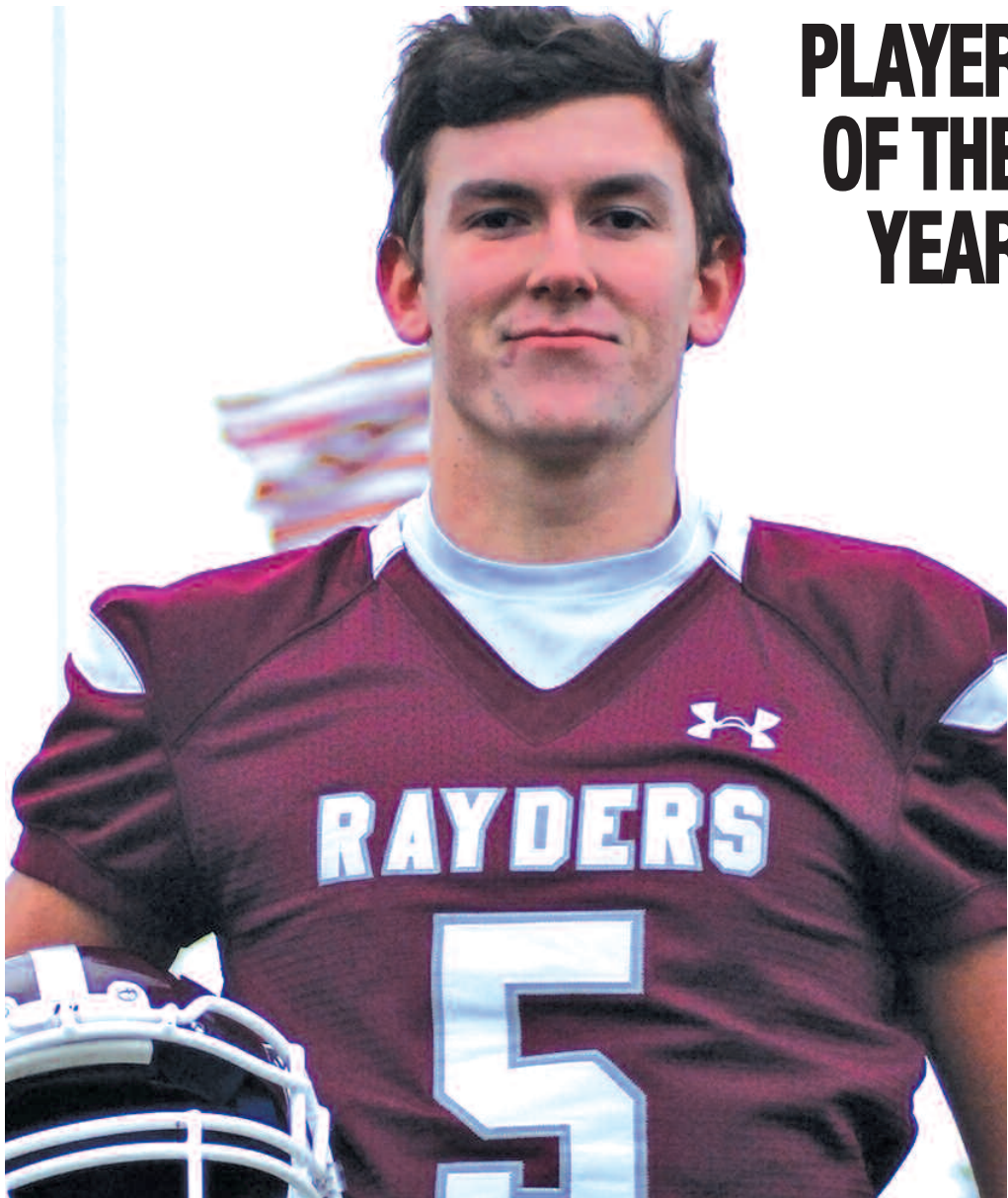
277 EXPRESSWAY COURT
JUST WEST OF I-75 • EXIT 282 • GAYLORD

TURN NORTH AT MEECHER ROAD (TRAFFIC SIGNAL BY WALGREENS ON M-32 WEST) • NORTH 2 BLOCKS TO EXPRESSWAY COURT
NEW HOURS: SALES & PARTS: MONDAY - SATURDAY 9AM - 5PM, SERVICE: MONDAY - SATURDAY 9AM - 5PM. CLOSED SUNDAYS



2019 CHARLEVOIX COUNTY NEWS ALL-AREA FOOTBALL

PLAYER OF THE YEAR



Cole Wright

Charlevoix



Alan Ritter

Charlevoix



Luke Snyder

Charlevoix



Jake Snyder

Charlevoix



Luke Stuck

Charlevoix



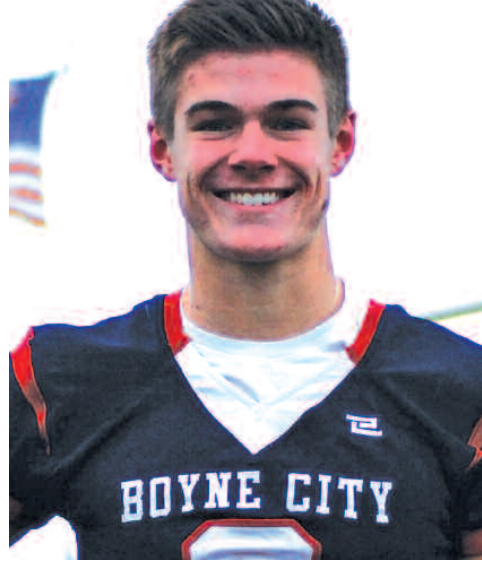
Dimitri Bell

Charlevoix



Pete Calcaterra

Boyne City



Bobby Hoth

Boyne City



Max Vondra

Boyne City



Phong Nguyen

Boyne City



Brayton Ager

Boyne City



Nick Aown

Boyne City



Jackson Raymond

East Jordan



Cooper Stevenson

East Jordan



Levi Pepin

East Jordan



Chandler Bartig

East Jordan



Zander Johncheck

East Jordan

COACH OF THE YEAR



Coach Don Jess

Charlevoix

ALL-AREA FOOTBALL

CONTINUED FROM PAGE 1B

and picked off one.

“Cole worked extremely hard in the off season to get ready for his senior year,” Rayder coach Don Jess said. “He was one of our team captains and did a great job leading the team. Cole made big play after big play throughout the season. He’s tremendous young man and a player that we’re very proud of.”

Joining Wright on the 2019 Charlevoix County News All-Area Football Team are Rayder teammates; Alan Ritter, Jake Snyder, Luke Snyder, Luke Stuck and Dimitrii Bell. Boyne City is represented by Pete Calcaterra, Bobby Hoth, Max Vondra, Phong Nguyen, Brayton Ager and

Nick Aown. East Jordan selections are; Jackson Raymond, Levi Pepin, Cooper Stevenson, Chandler Bartig and Zander Johncheck.

ALAN RITTER, CHARLEVOIX

Known for his speed, Ritter did not disappoint this season when he found some open space, gaining 892 yards rushing on 92 attempts and six touchdowns and one successful conversion.

Alan also hauled in 16 passes for 195 yards and two scores and a conversion.

Defensively, he had 82 tackles, caused a fumble, one sack, three interceptions and deflected three passes.

LUKE SNYDER, CHARLEVOIX

Luke was a force on defense and a nightmare for opposing offenses, leading the team with 139 tackles, three picks and a pass deflection.

He also proved to be a powerful addition to the offense, gaining 322 yards on the ground on 78 carries, scoring three times.

JAKE SNYDER, CHARLEVOIX

Wrapping up 69 tackles on defense, made four interceptions, scored a touchdown, deflected two passes and recovered a fumble.

Offensively, he added 376 yards rushing on 50 attempts, scoring once.

LUKE STUCK, CHARLEVOIX

Spending a majority of his time on the line, Stuck helped open holes for the Rayder rushers and held his ground, providing pass protection for Wright.

On defense, he was a monster, using his strength and size to push his way into the opponent’s backfield. He made 42 tackles, caused two fumbles, recovering one and recorded eight sacks.

DIMITRII BELL, CHARLEVOIX

Bell had a standout defensive effort this season, making 82 stops, causing and recovering one fumble, recording two sacks, picking off one pass and deselecting another.

PETE CALCATERRA, BOYNE CITY

Taking over a new role this season as the Rambler signal caller, Calcaterra had an exceptional season, throwing for 887 yards on 41-of-103 passing and nine touchdowns, converting one passing conversion attempt.

On the ground, Pete gained 240 yards on 52 attempts and scored four touchdowns.

Defensively, from his safety position, Pete had 35 tackles, intercepted five passes, including one for a touchdown and had three pass deflections.

BOBBY HOTH, BOYNE CITY

Hoth was a do-it-all player for Boyne this year, rushing for 350 yards on 77 carries, scoring four touchdowns, caught 11 passes for 270 yards and two scores. He would lead the team in scoring.

On defense, he tallied 59 tackles, two interceptions, including one for a score, deflected one pass and forced a fumble.

MAX VONDRA, BOYNE CITY

Vondra had 54 tackles from his linebacker position, including ten for a loss, while also making an interception and recovering a fumble.

On offense, Max had 10 receptions for 162 yards, three scores and a successful conversion.

PHONG NGUYEN, BOYNE CITY

Nguyen was the Ramblers power runner this season, gaining 605 yards on 138 carries, including four touchdowns.

BRAYTON AGER, BOYNE CITY

An anchor on the offensive line, Ager would help with protection for both runners and signal callers.

On defense, he would record 44 tackles from his linebacker position, eight tackles for a loss, three sacks and one fumble recovery.

NICK AOWN, BOYNE CITY

Another Rambler offensive lineman that gave outstanding protection to the skill positions.

As a linebacker on defense, Aown had a team-high 72 tackles, including seven for a loss, one sack and one pass deflection.

JACKSON RAYMOND, EAST JORDAN

Raymond had 40 receptions for 737 yards and eight touchdowns for an 18.4 yard average, while also totalling 185 yards on eight kick returns, including one touchdown. He also picked up 114 yards rushing for a combined total of 851 yards and 10 total touchdowns.

On defense, Jackson recorded 37 tackles and seven interceptions, returning one for a touchdown.

COOPER STEVENSON, EAST JORDAN

As a linebacker, Cooper recorded 105 tackles through eight games, with 11 tackles for loss and many others for no gain, while also recording two fumble recoveries.

Offensively, he averaged 6.4 yards per carry with four rushing TD’s as a fullback and also had 11 receptions for 118 yards receiving with a touchdown.

LEVI PEPIN, EAST JORDAN

A halfback/receiver for EJ, Levi had 448 yards rushing on 62 carries for a 7.2 yards per carry average with one rushing TD. He had 16 receptions for 320 yards (20 yard average) and seven touchdowns.

When returning kicks, he averaged just over 24 yards per return and almost 20 per punt return with one returned for a score. With his rushing, receiving and returns, Levi accounted for 945 yards and nine touchdowns.

On defense, Pepin added 54 tackles with an interception and two fumble recoveries.

CHANDLER BARTIG, EAST JORDAN

Returning from last seasons leg injury, Chandler threw for 1035 yards this year, with 13 touchdowns while also recording two rushing touchdowns.

As a safety on defense, he recorded 26 tackles, one interception and added a fumble recovery.

ZANDER JOHNECHECK, EAST JORDAN

Zander was the team’s second leading tackler with 73 tackles (9.1 per game). He also recorded a fumble recovery and returned an interception for a score.

On offense, he was a lineman and the Red Devils had games with 299 yards rushing and 391 yards rushing often running to his side. He also helped the team averaged 170 yards passing per game and Zander was credited with 0 sacks against.

Congratulations to all of the area athletes selected to the All-Area Team.

HUNTING

DNR: Deer-baiting ban remains in full effect

DNR offices around the state continue to field questions from people confused about the status of the baiting and feeding ban for deer and elk in the Lower Peninsula and the core CWD surveillance area in the Upper Peninsula. The DNR wants to let all hunters know that the ban has not changed and remains fully in effect.

Bills to lift the ban have been approved in the Michigan Legis-

lature, but nothing has been sent to Gov. Gretchen Whitmer or signed into law. The governor has promised to veto the legislation should it come to her desk.

This is important information, given that Michigan’s firearm deer season started Friday. The DNR will notify the public of any significant changes to deer regulations that might occur.

DNR seeks info about poached bull elk

VANDERBILT – Michigan Department of Natural Resources conservation officers in Gaylord are seeking information about a bull elk that was poached recently in the Pigeon River State Forest, east of Vanderbilt in Otsego County.

A large, bull elk carcass was located near Ford Lake Road approximately three-quarters of a mile south of the Grass Lake and Ford Lake Road intersection. Concerned citizens found the elk Monday and contacted local conservation officers. Officers suspect that the elk was killed Saturday or Sunday. The elk’s antlers included six points on one side and seven on the other.

“We are currently following up on leads,” said Lt. Jim Gorno. “We hope that the public can help us with this investigation, as they have always been helpful in the past. This is flat out poaching. A majestic elk was killed for no reason and left to rot.”

Anyone with information regarding this poaching incident



Conservation officers are seeking tips about a poached elk in Otsego County, Michigan. Anyone with information is asked to call or text the Report All Poaching hotline at 800-292-7800. Tipsters may remain anonymous. (courtesy of DNR)

can contact the DNR Customer Service Center in Gaylord at 989-732-3541 or call or text the 24-hour Report All Poaching hotline at 800-292-7800.

Information can be left anonymously; monetary rewards are available for information that leads to the arrest of violators.

Firearm season drives tradition, economic gains

Hunters across the state are ready for Michigan’s firearm deer season, which starts today, Nov. 15. Not only a time-honored tradition shared across many generations of Michiganders, this season also brings a significant boost in state revenue. Of all hunters in Michigan last year, over 600,000 of them – better than 90 percent – were deer hunters. This year, approximately half a million hunters are expected to take to the Michigan woods for the firearm deer season.

A recent study released by Michigan United Conservation Clubs estimates that hunting and fishing in Michigan generate \$11.2 billion a year, with the state’s nearly 700,000 hunters contributing \$8.9 billion – about 80 percent – of those critical dollars.

“For many Michigan hunters, there’s no more important time of the year than the annual deer hunting season. It’s a treasured outdoor tradition that brings together family and friends, and, for many, helps to put food on the table. This hunting season also gives a sizable lift to local economies across the state,” said Daniel Eichinger, director of the Michigan Department of Natural Resources. “We wish every hunter this season a safe, enjoyable and successful hunt.”

According to TravelUSA re-

search, leisure travel spending on hunting continues to bring important economic revenue to Michigan. Last year, travelers who participated in hunting as an activity contributed a direct spend of more than \$73 million in the state. Those who participated in hunting or fishing had a direct spend of over \$396 million.

“Hunting provides the perfect opportunity to get out and experience Michigan’s vast natural resources while contributing to the tremendous quality of life found here in our state,” said Jeff Mason, CEO of the Michigan Economic Development Corporation. “This time-honored tradition drives travel to Michigan as well as within the state, and that travel in turn generates economic impact for communities and businesses across Michigan.”

In 2018, Michigan saw 75,470 new customers for all hunting licenses combined, and Michigan continues to rank among the leading states for the number of paid hunting license holders. Firearm deer season was the biggest draw, with 483,341 of hunters participating in that season.

Get more information about hunting opportunities in Michigan – including season, license and regulation details and tips on safety and accessibility – at Michigan.gov/Hunting.

How can you tell if it's a button buck?

Each year many hunters harvest buck fawns, commonly called “button bucks,” on antlerless deer licenses. Though legal, harvesting these deer may reduce the number of antlered bucks the following year. By learning the difference between adult does and buck fawns and observing the following suggestions, hunters can make a conscious choice about whether to harvest a buck fawn.

* Look at body shapes of deer. Adult does are different in shape from juvenile deer. The mature doe is rectangular in shape with a long neck and face. Fawns are square-shaped and have a short neck and face.

* Button bucks often travel alone, but adult does rarely do. Consider this when you observe a single antlerless deer.

* Wait until more than three deer are together; then harvest

one of the larger antlerless deer.

* If two juvenile deer are without an adult, one will probably be a button buck. Normally the young male is larger than the female and may be mistaken for an adult doe because of its larger size. Look at the head of the deer. A doe’s head is normally more rounded on top between the ears, and a buck’s head is flattened by the base of the antlers.

* Look closely with binoculars for the antler bases on button bucks.

* Wait until the deer are standing or moving slowly. It is easier to identify sex and age when deer are not running or moving fast.

* Shoot with good visibility. Poor light and heavy cover make it difficult to determine sex and age.

Follow the Action

Pick up the Charlevoix County News each week for comprehensive coverage of your Charlevoix County Area High School Teams.

The Charlevoix County News is the local weekly newspaper for all of Charlevoix County. Local News and sports from Boyne City, East Jordan, Charlevoix, Boyne Falls, Walloon Lake, Ellsworth and Atwood. Available on News Stands every Thursday for 75 cents or have the newspaper delivered to your home for as low as \$35 a year.

Charlevoix County News 75c

Call: 989-732-8160

Fax: (888) 854-7441

Office@CharlevoixCountyNews.com

www.CharlevoixCountyNews.com

Parents and fans can send photos, local news and news releases for everything Charlevoix County to us at Office@CharlevoixCountyNews.com

Sports

ONLINE AT WWW.CHARLEVOIXCOUNTYNEWS.COM

Kitson signs with Northwood

EAST JORDAN – East Jordan High School is proud to announce that Molly Kitson signed her National Letter of Intent, committing to Northwood University, where she will run both cross country and track.

Kitson is a four year varsity cross country and track runner at East Jordan High School and is also a member of the girls varsity basketball and softball teams.

During her cross country and track career Molly has qualified, and run, in the state finals every season of her high school career. She has also earned numerous post-season awards in basketball and softball.

She is also Lake Michigan Conference scholar-athlete.



Pictured with Molly is her mother, Meg, and father, Greg as well as Assistant Coach Paul Nachazel, brother Granger and Head Cross Country and Track Coach Matt Peterson.

NBA STAT LEADERS

POINTS PER GAME	
1 James Harden HOU	37.9
2 Luka Doncic DAL	30.6
3 G. Antetokounmpo MIL	29.9
4 Bradley Beal WAS	29.6
5 Damian Lillard POR	28.3
6 Karl-Anthony Towns MIN	26.4
7 Brandon Ingram NOP	26.1
8 Donovan Mitchell UTA	25.9
8 Trae Young ATL	25.9
10 Pascal Siakam TOR	25.7

ASSISTS PER GAME	
1 LeBron James LAL	10.8
2 Luka Doncic DAL	9.8
3 Trae Young ATL	8.7
4 Malcolm Brogdon IND	8.2
5 James Harden HOU	8.0
6 Ben Simmons PHI	7.9
7 Jeff Teague MIN	7.7
7 Fred VanVleet TOR	7.7
9 Damian Lillard POR	7.2
10 Bradley Beal WAS	7.1

REBOUNDS PER GAME	
1 Andre Drummond DET	16.7
2 Clint Capela HOU	14.6
3 Rudy Gobert UTA	14.1
4 G. Antetokounmpo MIL	13.9
5 Domantas Sabonis IND	13.4
6 Karl-Anthony Towns MIN	12.4
7 Hassan Whiteside POR	12.0
8 Kevin Love CLE	11.8
9 Joel Embiid PHI	11.7
10 Nikola Vucevic ORL	11.6

STEALS PER GAME	
1 Jimmy Butler MIA	2.8
2 Ben Simmons PHI	2.3
3 Kawhi Leonard LAC	2.1
3 Jrue Holiday NOP	2.1
3 Kris Dunn CHI	2.1
6 Chris Paul OKC	1.9
7 Fred VanVleet TOR	1.8
8 Bam Adebayo MIA	1.7
8 Andre Drummond DET	1.7
10 James Harden HOU	1.6

BLOCKS PER GAME	
1 Anthony Davis LAL	3.0
2 Jonathan Isaac ORL	2.8
3 Brook Lopez MIL	2.5
4 Kristaps Porzingis DAL	2.2
5 Rudy Gobert UTA	2.1
5 Mitchell Robinson NYK	2.1
7 Clint Capela HOU	2.0
8 Andre Drummond DET	1.9
9 Hassan Whiteside POR	1.8
9 LaMarcus Aldridge SAS	1.8

NFL STAT LEADERS

PASSING YARDS	
1 Dak Prescott DAL	3433
2 Jameis Winston TB	3391
3 Philip Rivers LAC	3169
4 Tom Brady NE	2942
5 Russell Wilson SEA	2937
6 Matt Ryan ATL	2934
7 Deshaun Watson HOU	2899
8 Aaron Rodgers GB	2822
9 Patrick Mahomes II KC	2808
10 Jared Goff LAR	2783

RUSHING YARDS	
1 Christian McCaffrey CAR	1123
2 Nick Chubb CLE	1117
3 Dalvin Cook MIN	1017
4 Derrick Henry TEN	991
5 Josh Jacobs OAK	957
6 Leonard Fournette JAX	951
7 Ezekiel Elliott DAL	919
8 Chris Carson SEA	879
9 Marlon Mack IND	862
10 Carlos Hyde HOU	836

RECEIVING YARDS	
1 Michael Thomas NO	1242
2 Chris Godwin TB	1071
3 Mike Evans TB	1043
4 Julio Jones ATL	950
5 D.J. Moore CAR	905
6 Amari Cooper DAL	886
7 Stefon Diggs MIN	880
8 John Brown BUF	856
9 Cooper Kupp LAR	845
10 Jarvis Landry CLE	843

TACKLES	
1 Jordan Hicks ARI	111
2 Blake Martinez GB	108
3 Bobby Wagner SEA	103
4 Jaylon Smith DAL	98
4 Budda Baker ARI	98
6 Joe Schobert CLE	97
7 Luke Kuechly CAR	96
7 De'Vondre Campbell ATL	96
9 K.J. Wright SEA	95
10 Landon Collins WAS	94

SACKS	
1 Chandler Jones ARI	12.5
1 Shaquil Barrett TB	12.5
3 T.J. Watt PIT	11.5
4 Preston Smith GB	10.5
5 Arik Armstead SF	10.0
5 Za'Darius Smith GB	10.0
5 Myles Garrett CLE	10.0
8 Robert Quinn DAL	9.5
8 Cameron Jordan NO	9.5
10 Danielle Hunter MIN	8.5

INTERCEPTIONS	
1 Devin McCourty NE	5
1 Minkah Fitzpatrick PIT	5
3 Stephon Gilmore NE	4
3 Janoris Jenkins NYG	4
3 Desmond Trufant ATL	4
3 Marcus Peters BAL	4
3 Quinton Dunbar WAS	4
3 Joe Schobert CLE	4
3 Tre'Davious White BUF	4
3 Marcus Williams NO	4

FISHING

Report marked or tagged fish to DNR

Have you ever been fishing Michigan waters and pulled in a fish with a missing fin or one with an external tag on it? Several fish species found around the state are marked in some way, and the details on the fish and the tags are important to several DNR studies and management efforts.

Such species include Chinook and Atlantic salmon, steelhead, walleye, lake sturgeon and brown and lake trout. A fish may have an external mark, such as a fin clip, or the mark could be internal and not visible to the naked eye. Many fish

with internal tags also will have a clipped fin. For instance, a fish with an implanted coded-wire tag in its snout would be missing its adipose fin (the small, fleshy fin found to the rear of a fish's dorsal, or top, fin).

Anglers may come across several different fish tags, including:

Telemetry or temperature/depth-recording tags, some of which would be discovered only when cleaning a fish for consumption (although some external tags are visible).

Anchor tags, which often

are inserted near the base of a fin.

Jaw tags, which hook onto a fish's upper or lower jaw.

Tags can be reported through the tagged fish form, available on the DNR's Eyes in the Field observation reporting system. The form asks for contact information; catch location, fish and tag details; and (if available) photos.

Anglers who catch and keep fish with large internal or external tags (about the size of a finger in some cases) are urged to return the tags to the nearest DNR

office. The tags often can be reused, and some tags also offer small monetary rewards. In most cases, an angler will receive a detailed report about the fish the tag came from. For tagged fish intended for release, please don't remove tags; just report the tag information.

Marking and tagging fish help the DNR understand their growth, mortality, exploitation and movement, as well as the value of naturally reproduced versus stocked fish. Learn more about these efforts at Michigan.gov/TaggedFish.



Anglers fishing in Michigan may come across fish with external or internal tags. Reporting those fish and their tag information is extremely helpful to Michigan Department of Natural Resources fisheries research and management. Plus, some tags offer a small reward. (courtesy of DNR)

COLLEGE BASKETBALL TOP 25 AP POLL

#	Team	Record	Pts Last	#	Team	Record	Pts Last	#	Team	Record	Pts Last	#	Team	Record	Pts Last
1	Duke (53)	6-0	1610	8	Gonzaga	6-0	1222	15	Utah State	7-0	702	22	Villanova	4-2	247
2	Louisville (7)	6-0	1512	9	Kentucky	5-1	1090	16	Memphis	5-1	587	23	Washington	5-1	228
3	Michigan State (4)	3-1	1500	10	Ohio State	5-0	1033	17	Tennessee	4-0	490	24	Florida	5-2	148
4	Kansas	3-1	1383	11	Oregon	5-0	1006	18	Auburn	5-0	488	25	Xavier	6-1	139
5	Maryland	5-0	1262	12	Texas Tech	5-0	933	19	Baylor	5-1	450	Teams Receiving Votes: Iowa State 74 , Virginia 38 , Texas A&M 27 , Air Force 22 , SMU 9 , Arizona State 4 , Louisiana 1			
6	North Carolina	4-0	1260	13	Seton Hall	4-1	866	20	Virginia Commonwealth	5-0	426				
7	Virginia	6-0	1232	14	Arizona	6-0	716	21	Colorado	4-0	290				

NBA STANDINGS

EASTERN CONFERENCE

Team	W	L
Milwaukee Bucks	13	3
Boston Celtics	11	4
Miami Heat	11	4
Toronto Raptors	11	4
Philadelphia 76ers	11	5
Indiana Pacers	9	6
Brooklyn Nets	8	8
Orlando Magic	6	9
Washington Wizards	5	9
Charlotte Hornets	6	11

Chicago Bulls	6	11
Cleveland Cavaliers	5	11
Detroit Pistons	5	11
Atlanta Hawks	4	12
New York Knicks	4	13

WESTERN CONFERENCE

Team	W	L
Los Angeles Lakers	14	2
Denver Nuggets	12	3
Los Angeles Clippers	12	5
Dallas Mavericks	11	5

Utah Jazz	11	5
Houston Rockets	11	6
Phoenix Suns	8	8
Minnesota Timberwolves	8	8
Sacramento Kings	7	8
New Orleans Pelicans	6	11
San Antonio Spurs	6	11
Memphis Grizzlies	5	10
Oklahoma City Thunder	5	10
Portland Trail Blazers	5	12
Golden State Warriors	3	14

NFL STANDINGS

American Football Conference

AFC EAST TEAM	W	L	T
New England Patriots	10	1	0
Buffalo Bills	8	3	0
New York Jets	4	7	0
Miami Dolphins	2	9	0

AFC NORTH TEAM	W	L	T
Baltimore Ravens	8	2	0
Pittsburgh Steelers	6	5	0
Cleveland Browns	5	6	0
Cincinnati Bengals	0	11	0

AFC SOUTH TEAM	W	L	T
Houston Texans	7	4	0
Indianapolis Colts	6	5	0

Tennessee Titans	6	5	0
Jacksonville Jaguars	4	7	0

AFC WEST TEAM	W	L	T
Kansas City Chiefs	7	4	0
Oakland Raiders	6	5	0
Los Angeles Chargers	4	7	0
Denver Broncos	3	8	0

National Football Conference

NFC EAST TEAM	W	L	T
Dallas Cowboys	6	5	0
Philadelphia Eagles	5	6	0
New York Giants	2	9	0
Washington Redskins	2	9	0

NFC WEST TEAM	W	L	T
San Francisco 49ers	10	1	0
Seattle Seahawks	9	2	0
Los Angeles Rams	6	4	0
Arizona Cardinals	3	7	1

NFC NORTH TEAM	W	L	T
Green Bay Packers	8	3	0
Minnesota Vikings	8	3	0
Chicago Bears	5	6	0
Detroit Lions	3	7	1

NFC SOUTH TEAM	W	L	T
New Orleans Saints	9	2	0
Carolina Panthers	5	6	0
Tampa Bay Buccaneers	4	7	0
Atlanta Falcons	3	8	0

NFL FOOTBALL SCHEDULE

Thursday, November 28

Chicago at Detroit 12:30pm
 Buffalo at Dallas 4:30pm
 New Orleans at Atlanta 8:20pm

Sunday, December 1

San Francisco at Baltimore 1:00pm
 Washington at Carolina 1:00pm

Sunday, December 1

NY Jets at Cincinnati 1:00pm
 Tennessee at Indianapolis 1:00pm
 Tampa Bay at Jacksonville 1:00pm
 Oakland at Kansas City 1:00pm
 Philadelphia at Miami 1:00pm
 Green Bay at NY Giants 1:00pm

Sunday, December 1

LA Rams at Arizona 4:05pm
 LA Chargers at Denver 4:25pm
 Cleveland at Pittsburgh 4:25pm
 New England at Houston 8:20pm

Monday, December 2

Minnesota at Seattle 8:15pm

COLLEGE FOOTBALL TOP 25 AP POLL

#	Team	Record	Pts Last	#	Team	Record	Pts Last	#	Team	Record	Pts Last	#	Team	Record	Pts Last
1	LSU (50)	11-0	1,537	8	Florida	9-2	1,058	16	Auburn	8-3	635	24	Navy	8-2	99
2	Ohio State (9)	11-0	1,486	9	Minnesota	10-1	996	17	Memphis	10-1	535	25	USC	8-4	79
3	Clemson (3)	11-0	1,440	10	Michigan	9-2	913	18	Cincinnati	10-1	518	Others receiving votes: Iowa State 74 , Virginia 38 , Arizona A&M 27 , Air Force 22 , SMU 9 , Texas State 4 , Louisiana-Lafayette 1 , North Dakota State 1			
4	Georgia	10-1	1,347	11	Baylor	10-1	910	19	Iowa	8-3	510				
5	Alabama	10-1	1,283	12	Penn State	9-2	903	20	Boise State	10-1	410				
6	Utah	10-1	1,231	13	Wisconsin	9-2	791	21	Oklahoma State	8-3	266				
7	Oklahoma	10-1	1,189	14	Oregon	9-2	784	22	Appalachian State	10-1	206				
				15	Notre Dame	9-2	701	23	Virginia Tech	8-3	147				

**Run for
As Low As
\$200**

CLASSIFIEDS

**Delivered throughout
Charlevoix County Each Week!**

CALL: 989.732.8160 | EMAIL: office@CharlevoixCountyNews.com | ORDER ONLINE: www.CharlevoixCountyNews.com

4 WHEEL DRIVE

2010 Dodge Ram 1500 Laramie. Quad cab, 5.7L Hemi. \$17,500. As low as \$274 a month. Jim Wernig Chevrolet. 2401 Old 27 South, Gaylord. 989-732-5161. www.ChevyCentral.com

2010 Toyota Tundra. Double cab, TDR, 4.6L V-6. \$19,600. As low as \$307 a month. Jim Wernig Chevrolet. 2401 Old 27 South, Gaylord. 989-732-5161. www.ChevyCentral.com

2012 Chevy Silverado 1500 WT. 4.3L V8, Suspension Pkg., Heavy Duty trailing pkg., 4WD, OnStar. \$13,950. Dave Kring Chevy Cadillac. 1861 US 31 North, Petoskey, 231-347-2585

2016 Chevy Silverado 1500 LT. Double cab, 4.3L V-6. \$24,342. As low as \$384 a month. Jim Wernig Chevrolet. 2401 Old 27 South, Gaylord. 989-732-5161. www.ChevyCentral.com

2016 Chevy Silverado 1500. Double cab, custom, 5.3L V-8. \$24,800. As low as \$388 a month. Jim Wernig Chevrolet. 2401 Old 27 South, Gaylord. 989-732-5161. www.ChevyCentral.com

2017 Chevy Silverado 1500 LT. Double cab, 5.3L V-8. \$29,000. As low as \$462 a month. Jim Wernig Chevrolet. 2401 Old 27 South, Gaylord. 989-732-5161. www.ChevyCentral.com

2018 Ford F-150 XLT. Super crew, 5.0L V-8. \$30,000. As low as \$470 a month. Jim Wernig Chevrolet. 2401 Old 27 South, Gaylord. 989-732-5161. www.ChevyCentral.com

2019 Chevy Silverado 4x4 Custom Double cab. Lease as low as \$189 per month for 24 months with \$995 due at signing. Jim Wernig Chevrolet. 2401 Old 27 South, Gaylord. 989-732-5161. www.ChevyCentral.com

2019 Chevy Silverado 4x4 LT Double Cab. Lease as low as \$209 a month for 24 months with \$995 due at signing. Jim Wernig Chevrolet. 2401 Old 27 South, Gaylord. 989-732-5161. www.ChevyCentral.com

2019 Chevy Suburban 4x4 LT. Lease as low as \$539 a month for 36 months with \$1,595 due at signing. Jim Wernig Chevrolet. 2401 Old 27 South, Gaylord. 989-732-5161. www.ChevyCentral.com

2019 Ford F-150 XLT, 4WD, tow pkg, reverse sensing system, 36 gallon fuel tank, SYNC 3 with 8 touchscreen, FordPass connect 4G Wi-Fi hotspot, 3.5L EcoBoost. MSRP \$55,645. Feeny Price \$45,946. Feeny Ford. 208 S. James, Grayling. 989-348-2791

2019 Ford F-150 XLT. 4WD, 3.5L EcoBoost, tow pkg, SYNC 3 with 8 touchscreen, rear camera, FordPass connect 4G Wi-Fi hotspot, 23 MPG Hwy. MSRP \$57,655. Feeny Price \$44,562. Feeny Ford. 208 S. James, Grayling. 989-348-2791

2019 Ford F-150 XLT. 4WD, navigation, heated seats, 2.7L EcoBoost twin turbo, tow pkg, SYNC 3 with 8 touchscreen, rear camera, FordPass connect 4G Wi-Fi hotspot. MSRP \$51,820. Feeny Price \$39,254. Feeny Ford. 208 S. James, Grayling. 989-348-2791

2019 Ford F-150 XLT. 4x4, pre-collision assist, SYNC 3, FordPass 4G Wi-Fi hotspot, MSRP \$51,820. Feeny Price \$39,239. Feeny Ford. 208 S. James, Grayling. 989-348-2791

2019 Ford F-150 XLT. SuperCrew, 4WD, tow pkg, trailer sway control, rear camera, FordPass connect 4G Wi-Fi hotspot, EcoBoost 2.7L V6 GTDi DOHC 24V Twin Turbo, wireless phone connectivity, MSRP \$51,820. Feeny Price \$39,239. Feeny Ford. 208 S. James, Grayling. 989-348-2791

2019 Ford F-350SD Lariat. 4x4, Power Stroke V8 DI 32V OHV Turbodiesel, crew cab, 5th Wheel/Gooseneck Hitch Prep Package, blind spot information system, SYNC 3, engine block heater, heated seats, snow plow camper pkg, twin panel moonroof, voice activated navigation. MSRP \$74,925. Feeny Price \$68,531. Feeny Ford. 208 S. James, Grayling. 989-348-2791

2019 Ford F-350SD STX. 4x4, trailer brake system, rear camera, 6.7 Power Stroke 6.7L V8 DI 32V OHV Turbodiesel, 5th Wheel/Gooseneck Hitch Prep pkg, Snow Plow/Camper Package. MSRP \$58,270. Feeny Price \$51,580. Feeny Ford. 208 S. James, Grayling. 989-348-2791

2019 Ford F-350SD STX. 4x4, trailer brake system, rear camera, 6.7 Power Stroke 6.7L V8 DI 32V OHV Turbodiesel, 5th Wheel/Gooseneck Hitch Prep pkg, Snow Plow/Camper Package. MSRP \$58,270. Feeny Price \$51,580. Feeny Ford. 208 S. James, Grayling. 989-348-2791

2019 Ford F-350SD STX. 4x4, trailer brake system, rear camera, 6.7 Power Stroke 6.7L V8 DI 32V OHV Turbodiesel, 5th Wheel/Gooseneck Hitch Prep pkg, Snow Plow/Camper Package. MSRP \$58,270. Feeny Price \$51,580. Feeny Ford. 208 S. James, Grayling. 989-348-2791

2019 Ford F-350SD STX. 4x4, trailer brake system, rear camera, 6.7 Power Stroke 6.7L V8 DI 32V OHV Turbodiesel, 5th Wheel/Gooseneck Hitch Prep pkg, Snow Plow/Camper Package. MSRP \$58,270. Feeny Price \$51,580. Feeny Ford. 208 S. James, Grayling. 989-348-2791

2019 Ford F-350SD STX. 4x4, trailer brake system, rear camera, 6.7 Power Stroke 6.7L V8 DI 32V OHV Turbodiesel, 5th Wheel/Gooseneck Hitch Prep pkg, Snow Plow/Camper Package. MSRP \$58,270. Feeny Price \$51,580. Feeny Ford. 208 S. James, Grayling. 989-348-2791

ADVICE FROM GOD

All praise to God, the Father of our Lord Jesus Christ. God is our merciful Father and the source of all comfort. He comforts us in all our troubles so that we can comfort others. When they are troubled, we will be able to give them the same comfort God has given us. 2 Corinthians 1: 3-4 NLT

APARTMENTS FOR RENT

2 BEDROOM, 1 BATH, downtown Gaylord. Laundry, parking and garbage services, no smoking, \$725 a month. 12 month lease. Inquiries, mip0hlc@gmail.com

AUCTIONS

2 ESTATE AUCTIONS PREVIEW December 5, 2-6pm, 122 N. Saginaw St., Byron, MI 48418. Over 100 knives, Acorn lifts, furniture, snow blower, collectibles, tools. Bid online December 5-9. NarhiAuctions.com. 810-266-6474

21 Vacant Lots Totaling Over 54 Acres, Live Absolute Auction Saturday, December 7th, 11 AM, Auction Location - McKinley Township Hall, 1820 US-31, Levering, MI. Leist Auctioneers, Michigan Auction.com. Frank Leist-Broker. 833-323-281D (2243).

Epic December Firearm Auction Live and Simulcast, December 8, 2019, 11AM. Leslie Event Center, 169 S. Main St., Leslie, MI. Online bidding open now. Details, photos, register to bid: www.EpicAuctions.com 734-320-9627.

Hobby Farm or Hunting Camp Live Estate Auction. Saturday, November 30, 2019, 10:00 AM. 30 acres farmland, 10 acres woods 2838 S. Wisner Rd. Ithaca, MI. Singlewide, steel building, personal Property. www.SherwoodAuctionServiceLLC.com 989-763-7157.

LIVE Estate Farm Auction Thursday, Dec. 12, 2019, 10AM. 2631 Meyette Rd. Pinconning, MI. 13 Tractors along with farm machinery and items. Photos and Details at www.sykorauctions.com. 989-386-9694.

Longstreth Moving Auction Sat. Nov. 30 at 10 AM. Sale Features; Several quality firearms, ammo., knife collection, modular tent, Kawasaki ATV, 16' car hauler trailer, boats, 53' storage semi-trailer, household furnishings & collectibles. Located; 2400 Elm Rd., Clare. Chuck & Patti Longstreth, Owners. John Peck, Auctioneer 989-426-8061. To view a complete listing with photo's visit johnpeckauctions.com

Lowry Moving Auction Sun. Dec. 1 at 12:00 Noon. Sale Features; Ford 8N Tractor, farm equip., Polaris 4x4 ATV, fishing boat, portable log splitter, several pcs. of good lawn & garden equip., storage building, utility trailers, sporting items, tools & collectible items. Located; 4763 E. Shaffer Rd., Midland. Andy Lowry, Owner. John Peck, Auctioneer 989-426-8061. To view a complete listing with photo's visit johnpeckauctions.com

WANTED: Collectors, Re-sellers, Bargain Hunters. NOTICE: Weekly Online Estate Sales & Collector Auctions. Full Homes, Themed Collections, Commercial. Local Pickup or Worldwide Shipping! Checkout our Current & Upcoming Auctions: EstateAuctionExperts.com

WATERCRAFT AND MOTORSPORTS BIG AUCTION - Saturday, December 7 and December 21, 2019. Buy or sell. Information at www.snowmobileauction.com or call 517-369-1153. WhiteStar Motorsports Auction, US 12, Bronson, MI.

Waterfront Property Online Only Absolute Auction, Bidding Ends December 8. Waterfront lot, huge heated storage building and 60' dock. Open Houses 11/26 & 12/1 2p-4p. Bid at

MichiganAuction.com Leist Auctioneers, Frank Leist-Broker. 833-323-281D (2243).

Weekly Online Auctions - Firearms, sporting goods, tools, lawn & garden, antiques & collectibles. Go to: SherwoodAuctionServiceLLC.com for details. Contact Auctioneer Joe Sherwood for your Live Onsite auction needs 989-640-9401.

AUTOMOBILES

1989 FORD PROBE. New, project. \$600. 231-340-9863

1990 LIMO. Velvet blue interior. Solid body. Needs work. \$1,000. 231-340-9863

2004 Kia, New CD and Battery. \$700. 231-340-9863

2013 Subaru Legacy AWD. CVT Transmission, Heated seats, Bluetooth. \$12,450. Dave Kring Chevy Cadillac. 1861 US 31 North, Petoskey, 231-347-2585

2014 Chevy Cruze. OnStar, Satellite radio, Traction control. \$7,950. Dave Kring Chevy Cadillac. 1861 US 31 North, Petoskey, 231-347-2585

2016 Audi A3 Premium. Premium plus pkg., Heated leather seats, Rear camera, Sunroof, Xenon headlights, 220hp. \$22,950. Dave Kring Chevy Cadillac. 1861 US 31 North, Petoskey, 231-347-2585

2017 Nissan Rogue S. AWD. \$16,400. As low as \$260 a month. Jim Wernig Chevrolet. 2401 Old 27 South, Gaylord. 989-732-5161. www.ChevyCentral.com

2019 Ford Flex SEL. AWD, leather heated seats, tow pkg, 3rd row seat, voice activated touchscreen navigation, remote start, SYNC 3, 3.5L MSRP \$40,585. Save \$5,992. Feeny Price \$34,593. Feeny Ford. 208 S. James, Grayling. 989-348-2791

2019 Ford Mustang Shelby GT 350. 6 speed manual, 5.2L Ti-VCT V8, leather/miko suede climate controlled sport seats, Technology pkg, hood vent, rear spoiler, FordPass 4G Wi-Fi, SYNC 3, Feeny Price \$66,340. Feeny Ford. 208 S. James, Grayling. 989-348-2791

CLASSIC AUTOS

CASH FOR pre-1970 vehicles. Michel's Collision & Restoration 231-622-1553

FIREWOOD & WOODSTOVES

DRY FIREWOOD. Delivered within 30 miles of Boyne. Sawdust Available. 231-631-9600. B. Moeke, Boyne City.

FURNITURE

Adjustable Bed Brand New with Im-comfort gel memory foam mattress. Retail Cost \$3,995, sacrifice for \$575. Call for showing or delivery 989-615-2951.

Wood coffee table, black, like new, very nice from Old Spud Warehouse. \$75. 989-350-9236.

GUNS

12 GAUGE Pump, raised rib, never fired, \$175. 231-882-0440

CONNECTICUT VALLEY ARMS incorporated Apollo, 50 cal. Black powder rifle, made in Spain. 231-640-0561

WEATHERBY 20 gauge pump. Never fired, \$275. 231-882-0440

WINCHESTER Model 1400, 12 gauge, 2 3/4 inch chamber, semi-auto, \$200. 989-786-5539

WINCHESTER Model 94, \$375. 231-882-0440

HELP WANTED

IN-HOME SERVICE PROVIDER. Part-time service provider position available at the Otsego County Commission on Aging (OCCOA). Agency is seeking a caring compassionate person with excellent professional skills. Certified Nursing Aid certification preferred but not required. Training available. Must be a team player committed to policies and procedures of the agency. In-Home Service providers assist area older adults with light homemaking tasks, personal care, and respite care. Work schedule provides and requires flexibility. A strong asset of dependability is necessary. Position requires accepting short and long term assignments on short notice. Candidates must have a valid driver's license and reliable transportation. Pre-employment drug-screen testing as well as physical exam required. Applications available at the OCCOA office, 120 Grandview Blvd., Gaylord. Also

available via fax or email by calling 989-732-1122, or at the OCCOA website, www.OtsegoCountyCOA.org. The OCCOA is an Equal Employment Opportunity Employer

NEWS REPORTER - Charlevoix - Attend and report on local governmental meetings, school board and local news reporting. Experienced writer and photographer a plus. Must have Digital camera and computer. E-mail info and samples to Dave at Office@CharlevoixCountyNews.com

NEWSPAPER WEEKEND DELIVERY. 2 ROUTES OPEN. Walk Route and Motor Route. We have an immediate opening in this area. Home Delivery is primarily on Saturday or Sunday before Noon. Nice extra income for a few hours of work. You will need dependable transportation and weekends free. E-mail Office@WeeklyChoice.com or call or text Lewis at 231-384-5899. Advertisers Postal Service.

SALES POSITION - EAST JORDAN/BOYNE CITY/CHARLEVOIX. Are you a great salesperson? Are you making enough money? This is a great opportunity for the right person. Independent contractor position earns 20% commission. Businesses love the results they get from advertising in the Charlevoix County News and our 13 weekly papers. I need a great salesperson in the Charlevoix County area. Send your resume to Dave Baragrey 1. E-mail to Office@CharlevoixCountyNews.com.

WORK FROM HOME. We are adding a position for telemarketing/email marketing to sell advertising in our 13 papers. Work your own schedule. 20% commission. You can live anywhere in Northern Michigan. We are locally owned family newspaper business based in Gaylord. Contact Dave, office@WeeklyChoice.com

HOUSEHOLD

Brian's Heat & Cool. New and replacement air conditioning and gas furnaces. Duct-less mini-split heat pumps. Maintenance and repair. Cheboygan county and surrounding

areas. 231-445-9120, cell 810-222-9280. briansheat.com

MISCELLANEOUS

Cabelas model 28-0501 Digital Dehydrator, 1600 watt, 160 liter, commercial rated. \$500 new. Great condition, \$200. Gaylord. Call or text 989-350-9236.

Get NFL Sunday Ticket free w/ DIRECTV Choice all-included package. \$59.99 month for 12 months. 185 channels plus thousands of shows, movies on demand. Free Genie HD DVR upgrade. Call 888-351-0154 or satellitedealnow.com/CPMI

LOWEST COST IN MICHIGAN! CLASSIFIED ADS ARE JUST \$2 for an 8-word ad in the Weekly Choice, Charlevoix County News or Michigan MoneySaver. The area's widest distribution paper and the lowest cost for advertising. E-mail your ad to Office@WeeklyChoice.com or call 989-732-8160. The Weekly Choice is distributed weekly from Mackinaw City to Grayling. 11 zones of the Michigan MoneySaver distributed from Lake Michigan to Lake Huron. Northern Michigan's best choice for buying and selling.

METAL ROOFING regular and shingle style, half off on special colors. Also, lifetime asphalt shingles available. Licensed and insured builders. Quality work for 40 years. 517-575-3695.

Reach Across Michigan with a Mega-Market Statewide Classified Ad! Over 1.2 million weekly circulation just \$249 per week! Buy 3 Get 1 Free! Call the Michigan MoneySaver, 989-732-8160.

Shop Michigan this holiday season! Keep your money in the Mitten to strengthen YOUR community. BuyNearbyMI.com

RECREATIONAL VEHICLES

2019 COACHMEN CLIPPER FQS Travel Trailer. Slideout. It gives you so MUCH ROOM in such an easy to tow camper! MSRP \$18,598. END OF SEASON CLEARANCE. \$13,500. Northern Michigan RV. 277 Expressway Court, Gaylord. 989-448-8700. www.NorthernMichiganRV.com

**PROCEEDINGS OF THE
EAST JORDAN CITY COMMISSION**

The East Jordan City Commission met November 19, 2019 at 7:00 p.m.; Mayor Peck presiding with all members of Commission. Acknowledgement was given to paid bills in the amount of \$243,341.70.

Further Commission Action: Acknowledged Receipt of the Monthly Public Safety Reports for Police-Summer/Fall 2019; approved Ordinance #253; approved revised Administrative Policy #124-A; approved Pay App #4 Water Tank Project in the amount of \$46,351.37; approved Pay App #4 Infrastructure Project in the amount of \$706,680.23; approved Mill Street Force Main Engineering Project proposal; and appointed Justin Kelley to Planning Commission vacancy. Copies of the minutes of the above meeting are posted in City Hall for review during normal office hours.

Cheltzi M. Wilson, CMC
City Clerk

STATE OF MICHIGAN PROBATE COURT COUNTY OF CHARLEVOIX FILE NO. 19-012891-DE

**NOTICE TO CREDITORS
Decedent's Estate**

Estate of James H. Wernig Jr. Date of birth: 06/02/1933

TO ALL CREDITORS:

NOTICE TO CREDITORS: The decedent, James H. Wernig, died 06/15/2019.

Creditors of the decedent are notified that all claims against the estate will be forever barred unless presented to Linda Wernig, personal representative, or to both the probate court at 301 State St., Charlevoix, MI 49720 and the personal representative within 4 months after the date of publication of this notice. 11/22/2019

Jennifer Duitsman Coy #P74627
145 N. Otsego Ave.
Gaylord, MI 49735
(989) 732-2912

Linda Wernig
8400 Boyne City Rd.
Charlevoix, MI 49720
(231) 590-0033

Choice Publications

classifieds

Place a 8 Word Classified Ad in any single publication for only **\$2.00** Addl. Words 25¢ Each

OR.. Place a 8 Word Classified Ad in all 13 publications for only **\$26.00** Addl. Words \$3.00 Each

PUBLICATIONS (chk each)

Weekly Choice
 Charlevoix County News
 Antrim Moneysaver

Bay Area Moneysaver
 Charlevoix County Moneysaver
 Cheboygan/Rogers City Moneysaver
 Gaylord Moneysaver

Grayling Moneysaver
 Iosco/Alcona Moneysaver
 Kalkaska Moneysaver
 Montmorency County Moneysaver

Northwest Moneysaver
 Ogemaw/Oscoda Moneysaver

CATEGORY (chk one)

4 WHEEL DRIVE
 ADOPTION
 ANNOUNCEMENTS
 APARTMENTS
 APPLIANCES
 ARTS & CRAFTS
 AUTO PARTS
 AUTOMOBILES

BOATS & MARINE
 BUILDING MATERIALS
 BUSINESS VENTURES
 CHILDCARE
 CLASSIC AUTO
 COMMERCIAL PROPERTY
 COMPUTERS & OFFICE
 FARM
 FIREWOOD & WOOD-
 STOVES

FREE ITEMS
 FRESH FOOD
 FURNITURE
 GARAGE & YARD SALES
 GUNS
 HAY & STRAW
 HEALTH & FITNESS
 HEAVY EQUIPMENT
 HELP WANTED
 HOMES FOR RENT

HOMES FOR SALE
 LAND & PROPERTY
 LAWN & GARDEN
 LEGAL NOTICES
 LOGGING & LUMBER
 LOST & FOUND
 MEDICAL
 MISCELLANEOUS
 MOTORCYCLES & ATV
 MUSIC

NOTES OF ENCOURAGE-
 MENT
 PERSONALS
 PETS
 RECREATIONAL VEHICLES
 SERVICES
 SNOW REMOVAL
 SNOWMOBILES
 SPORTING GOODS
 STORAGE

SUV
 THANK YOU
 TIRES
 TOOLS
 TRAILERS
 TRUCKS
 TV ANTENNAS
 VACATION PROPERTY
 VANS
 WANTED

Name: _____ Address: _____

City: _____ State: _____ ZIP: _____ Phone: _____ E-Mail: _____

Credit Card Type: VISA MASTERCARD DISCOVER AMER EXPRESS Card #: _____

EXP _____ SEC CODE: _____ Signature: _____


1	2	3	4	5
6	7	8	9	10
11	12	13	14	15
16	17	18	19	20
21	22	23	24	25
26	27	28	29	30

Number of Words: _____ x25¢ = Cost: _____ (\$2 Minimum)


Multiply by number of publications selected = Total Cost: _____

Fill Out and Mail To: **Choice Publications, PO Box 382, Gaylord, MI 49734** • Place your classified online at **www.MichiganMoneysaver.com**
Bring your ad into the **Weekly Choice office** at 112 East Sixth St., Gaylord • Place your ad by phone at **989-732-8160**, or e-Mail: **Office@WeeklyChoice.com**

Michigan MoneySaver



**Weekly Choice
County News**



**Run for
As Low As
\$200**

CLASSIFIEDS

**Delivered throughout
Charlevoix County Each Week!**

CALL: 989.732.8160 | EMAIL: office@CharlevoixCountyNews.com | ORDER ONLINE: www.CharlevoixCountyNews.com

RECREATIONAL VEHICLES

2019 EAST TO WEST Della Terra 25 KRB Travel Trailer. Power awning, king bed, large picture window. MSRP \$27,670. You Save \$12,675. SALE PRICE \$14,995. Petoskey RV. 2215 US 31 North. Petoskey. 231-347-3200.

2020 Coachmen Clipper 9.0 TD Fold Down Camper/RV/Pop-Up. If you are looking for an excellent quality, very light weight camper that you can take just about anywhere, look no further than this Clipper 9.0TD. Inside you have a really comfortable bed. Just inside the door way is the kitchen area with a sink and fridge. This Clipper is perfect for your hunting trip. Easy to tow back into the woods, just about anyplace! Rest easy in your own little camper ready for the next day's adventure. Only one in stock. This pops up and down in literally under two minutes. Sale Price \$8,995. Northern Michigan RV. 277 Expressway Court, Gaylord. 989-448-8700. www.NorthernMichiganRV.com

2020 Palomino Backpack HS-2902 Truck Camper. This hard side is perfect for a one-ton truck with a 6-foot 6-inch bed or an 8-footbed. Slide-out, bathroom, full kitchen with triple burner stove, an oven, a sink, and a refrigerator. Dinette doubles as an extra place to sleep for the dog or a guest. The queen is located at the front and has storage and entertainment center. MSRP \$33,098. Sale Price \$23,995. Northern Michigan RV. 277 Expressway Court, Gaylord. 989-448-8700. www.NorthernMichiganRV.com

2020 Palomino Backpack HS-8801 Truck Camper. This truck camper is designed to a 3/4 TON Truck with eight a 6'6" or 8' bed. Wet bath, full kitchen with triple burner range, oven, double basin sink, frig. Sale Price \$19,995. Northern Michigan RV. 277 Expressway Court, Gaylord. 989-448-8700. www.NorthernMichiganRV.com

NEW 2020 Palomino Backpack 8801 Pickup Camper. Perfect for a _ ton with a 6-foot 6 inch or 8-foot bed. Side awning, rear awning, power jacks, wet bath and full kitchen. Electric Roof Lift. MSRP \$25,803. Sale Price \$19,995. Northern Michigan RV. 277 Expressway Court, Gaylord. 989-448-8700. www.NorthernMichiganRV.com

NEW 2020 Palomino Backpack SS-1251 Pickup Camper. Soft side perfect for a half ton with a 6-foot 6-inch bed. Power jacks, bathroom, sink, dual burner stove, and refrigerator, Electric Roof Lift, MSRP \$19,065. Sale Price \$14,995. Northern Michigan RV. 277 Expressway Court, Gaylord. 989-448-8700. www.NorthernMichiganRV.com

USED 1998 Salem 5th wheel 24 BHS. Slideout. Blowout price \$3,495. Northern Michigan RV. 277 Expressway Court, Gaylord. 989-448-8700. www.NorthernMichiganRV.com

Used 1999 Dutchmen RV Classic 31 FKDSL Travel Trailer. Slideout, Sofa Bed, Dinette Plus, Range, Frig, Residential Kitchen Sink, Ent. Center, Neo-Angle Shower, Linen Closet, Queen Bed w/ Nightstands, and

Much More! Regular \$5,995. You Save \$2,000. Our Price \$3,995. Petoskey RV. 2215 US 31 North. Petoskey. 231-347-3200.

Used 2002 Shadow Cruiser T-139 Travel Trailer. Small and lightweight!! SUV towable. Clearance price \$3,995. Northern Michigan RV. 277 Expressway Court, Gaylord. 989-448-8700. www.NorthernMichiganRV.com

USED 2005 Springdale 245 FBL Travel Trailer. Blowout price \$5,000. Northern Michigan RV. 277 Expressway Court, Gaylord. 989-448-8700. www.NorthernMichiganRV.com

USED Coachmen Catalina 246 RLS 5th wheel. Deer Hunter Special \$1,500. Northern Michigan RV. 277 Expressway Court, Gaylord. 989-448-8700. www.NorthernMichiganRV.com

SERVICES

CHAD VLASSIS PAINTING. Serving Northern Michigan Since 2012. 989-390-5730

Brian's Heat & Cool. New and replacement air conditioning and gas furnaces. Duct-less mini-split heat pumps. Maintenance and repair. Cheboygan county and surrounding areas. 231-445-9120, cell 810-222-9280. briansheat.com

SUV

2008 GMC Yukon Denali. Sunroof, DVD. \$14,800. As low as \$346 a month. Jim Wernig Chevrolet. 2401 Old 27 South, Gaylord. 989-732-5161. www.ChevyCentral.com

2009 Chevy Tahoe LTZ. Navigation, sunroof, DVD. \$14,000. As low as \$332 a month. Jim Wernig Chevrolet.

2401 Old 27 South, Gaylord. 989-732-5161. www.ChevyCentral.com

2011 Dodge Durango Express. AWD, sunroof. \$13,000. As low as \$250 a month. Jim Wernig Chevrolet. 2401 Old 27 South, Gaylord. 989-732-5161. www.ChevyCentral.com

2011 Ford Edge SEL. AWD, 3.5L V-6. \$11,315. As low as \$220 a month. Jim Wernig Chevrolet. 2401 Old 27 South, Gaylord. 989-732-5161. www.ChevyCentral.com

2012 Cadillac SRX AWD. Sunroof, 2nd row skylight, Bluetooth, Heated leather seats, Rear camera, \$11,950. Dave Kring Chevy Cadillac. 1861 US 31 North, Petoskey, 231-347-2585

2012 Honda Pilot Touring. 4WD, sunroof, DVD. \$14,500. As low as \$274 a month. Jim Wernig Chevrolet. 2401 Old 27 South, Gaylord. 989-732-5161. www.ChevyCentral.com

2013 Chevy Traverse 2LT. AWD, leather. \$12,500. As low as \$236 a month. Jim Wernig Chevrolet. 2401 Old 27 South, Gaylord. 989-732-5161. www.ChevyCentral.com

2014 Buick Encore AWD. OnStar, Rear camera, Satellite radio, 59K miles. \$13,950. Dave Kring Chevy Cadillac. 1861 US 31 North, Petoskey, 231-347-2585

2014 Ford Escape 4x4. CARFAX One owner, Heated leather seats, Reclining rear seats, Back-Up camera, Rear collision warning. \$13,950. Dave Kring Chevy Cadillac. 1861 US 31 North, Petoskey, 231-347-2585

2014 Ford Escape SE. AWD. \$9,800. As low as \$185 a month. Jim Wernig

Chevrolet. 2401 Old 27 South, Gaylord. 989-732-5161. www.ChevyCentral.com

2014 Ford Escape Titanium. AWD. \$11,200. As low as \$216 a month. Jim Wernig Chevrolet. 2401 Old 27 South, Gaylord. 989-732-5161. www.ChevyCentral.com

2014 GMC Terrain SLE. AWD. \$11,200. As low as \$177 a month. Jim Wernig Chevrolet. 2401 Old 27 South, Gaylord. 989-732-5161. www.ChevyCentral.com

2014 GMC Terrain SLE. AWD. \$11,400. As low as \$180 a month. Jim Wernig Chevrolet. 2401 Old 27 South, Gaylord. 989-732-5161. www.ChevyCentral.com

2014 Kia Sorento LX. AWD. \$12,200. As low as \$193 a month. Jim Wernig Chevrolet. 2401 Old 27 South, Gaylord. 989-732-5161. www.ChevyCentral.com

2015 Kia Sportage LX. AWD. \$13,500. As low as \$212 a month. Jim Wernig Chevrolet. 2401 Old 27 South, Gaylord. 989-732-5161. www.ChevyCentral.com

2015 Lincoln MKX. AWD, sunroof, navigation. \$21,500. As low as \$337 a month. Jim Wernig Chevrolet. 2401 Old 27 South, Gaylord. 989-732-5161. www.ChevyCentral.com

2016 Chevy Traverse LT AWD. CARFAX one owner, Third row seats, OnStar, Tow pkg, Rear camera. \$22,950. Dave Kring Chevy Cadillac. 1861 US 31 North, Petoskey, 231-347-2585

2016 Equinox LS AWD. CARFAX one owner, OnStar, Rear camera, Stabili-

trak. \$16,450. Dave Kring Chevy Cadillac. 1861 US 31 North, Petoskey, 231-347-2585

2016 GMC Acadia Denali AWD. GMC Certified pre-owned, Sunroof, Rear camera, Remote start, Tow pkg. \$26,950. Dave Kring Chevy Cadillac. 1861 US 31 North, Petoskey, 231-347-2585

2017 Dodge Journey GT. AWD. \$16,850. As low as \$264 a month. Jim Wernig Chevrolet. 2401 Old 27 South, Gaylord. 989-732-5161. www.ChevyCentral.com

2019 Chevy Blazer. Lease as low as \$219 a month for 24 months with \$995 due at signing. Jim Wernig Chevrolet. 2401 Old 27 South, Gaylord. 989-732-5161. www.ChevyCentral.com

2019 Chevy Traverse LT, AWD, Demo. MSRP \$41,600. Buy as low as \$29,873.35. Jim Wernig Chevrolet. 2401 Old 27 South, Gaylord. 989-732-5161. www.ChevyCentral.com

2019 Ford Edge SEL. AWD, heated seats, rear camera, leather seats, blind spot sensor, security system, cold weather pkg, FordPass connect 4G Wi-Fi hotspot, EcoBoost. MSRP \$40,995. Feeny Price \$31,166. Feeny Ford. 208 S. James, Grayling. 989-348-2791

2019 Ford Escape SEL. 4WD, leather heated seats, power lift gate, 28 MPG hwy, 1.5L EcoBoost, remote start, SYNC # with 8 screen, FordPass connect 4G Wi-Fi hotspot, rear camera. MSRP \$31,835. Save \$5,823. Feeny Price \$25,512. Feeny Ford. 208 S. James, Grayling. 989-348-2791

ORDINANCE #253

AN ORDINANCE TO AMEND CHAPTER 46 UTILITIES, ARTICLE III SEWERS

The City of East Jordan hereby ordains:

Sec. 46-124. - Use of public sewers required.

(a) The daily operation, repair and management of the system shall be under the immediate supervision and control of the city administrator. Some actions taken by the city administrator under this article are done at the direction and with the approval of the city commission.

(b) It shall be unlawful for any person to place, deposit or permit to be placed, deposited in any unsanitary manner upon public or private property within the city any human or animal excrement, garbage or other objectionable waste.

(c) It shall be unlawful to discharge to any natural outlet within the city or in any area under the jurisdiction of the city any sewage or other polluted waters, except where suitable treatment has been provided in accordance with all subsequent provisions of this article.

(d) Except as hereinafter provided, it shall be unlawful to construct or maintain any privy, privy vault, septic tank, cesspool, or other facility intended or used for the disposal of sewage.

(e) The owner of any houses, buildings, or properties used for human occupancy, employment, recreation, or other purposes, situated within the city and abutting on any street, alley or right-of-way in which there is now located or may in the future be located a public sanitary sewer or storm sewer of the city, is hereby required at his expense to install suitable toilet facilities therein, and to connect such facilities directly with the proper public sewer, and also to make such connections to storm sewers as are necessary in accordance with the provisions of this article, within 90 days of official notice to do so, provided that the public sewer is within 200 feet of the property line. Storm sewer connections shall be required as designated by the administrator.

(f) The administrator may require each person who does apply for or receives any sewer service, or through the nature of the enterprise created a potential problem, to file the material listed in this subsection:

(1) A written statement setting forth the nature of the enterprise, the source and amount of water used, the amount of water to be discharged, with its present or expected bacterial, physical, chemical, radioactive, or other pertinent characteristics of wastes.

(2) A plan map of the building, works, or complex, with each outfall to the surface waters, the sanitary sewer, storm sewer, natural watercourse, or underground waters noted, described, and the waste stream identified.

(3) A sample test, and report with the city administrator and appropriate state agencies on the appropriate characteristics of wastes on a schedule, at locations, and according to method approved by the administrator.

(4) Place waste treatment facilities, process facilities, waste streams, or other potential waste problems under the specific supervision and control of persons who have been certified by an appropriate state agency as properly qualified to supervise such facilities.

(5) A report on raw materials entering the process or support systems, intermediate materials, final products, and waste by-products as those factors may affect waste control.

(6) Maintained records and reports of the final disposal of specific liquids, solids, sludges, oils, radioactive material, solvents, or other wastes.

(7) Any report on alteration of or intent to alter an industrial process so as to include or negate a process waste or potential waste, provided, however, said alteration shall be noticed in writing to the City Administrator, who shall have final approval on such change.

(Code 1998, § 26-112; Ord. of 12-5-1995)

Sec. 46-125. - Private sewage disposal.

(a) Where a public sanitary sewer or combined sewer is not available the building sewer shall be connected to a private sewage disposal system complying with the provisions as set forth hereinafter.

(b) Before commencement of construction of a private sewage disposal system, the owner shall first obtain a written permit signed by a district health department officer.

(c) The health officer will notify the city when a permit for a private sewage disposal system is issued.

(d) The type, capacities, location, and layout of a private sewage disposal system shall comply with the recommendations of the department of public health of the state. No permit shall be issued for any private sewage disposal system employing subsurface soil absorption facilities where the area of the lot is less than 12,000 square feet. No septic tank or cesspool shall be permitted to discharge to any public sewer or natural outlet.

(e) At such time as a public sewer becomes available to a property served by a private disposal system, a direct connection shall be made to the public sewer in compliance with this division, and any septic tanks, cesspools, and similar private sewage disposal facilities shall be abandoned and filled with suitable material, typically clean sand or similar material within 90 days.

(f) The owner shall operate and maintain the private sewage disposal facilities in a sanitary manner at all times, at no expense to the city.

(g) The requirements contained in this division shall be construed so as not to limit or interfere with additional requirements that may be imposed by the health officer.

(h) If the owner or occupant of the property, upon which the same is located, shall fail to abandon and correct upon reasonable notice a private sewage disposal system then and in such case the city may do so, and charge the cost thereof to the property owner and to the occupant of such property, and such charges shall become a lien, collectible as such.

(Code 1998, § 26-113; Ord. of 12-5-1995)

Sec. 46-126. - Building sewers and connections.

(a) No unauthorized person shall uncover, make any connection with or opening into, use, alter, or disturb any public sewer or apertures thereof without first obtaining a written permit from the administrator.

(b) The property owner shall be responsible for the construction of the building sewer from the building service connection to the public sewer system.

(c) The owner or his agent shall make application on a special form furnished by the city. The permit shall be supplemented by any plans, specification, or other information considered pertinent in the judgment of the City Administrator. All connection fees shall be paid in full to the city treasurer at the time of filing application therefor and prior to the receiving of service to the premises.

(d) All liabilities incident to the installation and connection of the building sewer shall be borne by property owner. The property owner shall indemnify and save harmless the city from any loss or damage that may directly or indirectly be occasioned by the installation of the building sewer.

(1) It shall be the duty of each property owner to maintain, clean and repair the private sewer lines on his property at owners' expense as necessary to keep such lines free and clear of obstructions and in good working order and to maintain and keep clear of obstructions the lateral servicing his property.

(2) It shall be the duty of the city to maintain, clean and repair as necessary and at its expense the sewer trunk lines. The city shall not be responsible for the cleaning or maintenance of lateral lines.

(3) In the case of a bona fide dispute as to whether needed maintenance, cleaning or repair of a portion of sewer line is the responsibility of the property owner or the city under the provisions of this division, it shall be the duty of the property owner to establish that the obstruction disrepair or defect has occurred in that portion of the line for which the city is responsible.

If the property owner fails to establish the city responsibility, it shall be the property owner's responsibility to perform the necessary maintenance as provided in this ordinance. If the city responsibility is established, the city shall perform the necessary maintenance and shall reimburse the property owner for reasonable expenses incurred in locating the defect in the line or in otherwise establishing the city responsibility.

The property owner would be responsible under this division for the total maintenance and repair of the private sewer lines and for the maintenance and cleaning of the entire sewer line out to the trunk line.

The city, on the other hand, is responsible for major repair of the trunk line only and has no responsibility of any sort for the private lines. The city also has no responsibility to clean the lateral lines.

(4) Any property owner who shall violate the provisions of this division shall be liable to the city for civil damage incurred in correcting the defect, and in addition, shall be guilty of a misdemeanor.

(e) Old building sewers may be used in connection with new buildings only when they are found, on examination and test by the administrator, to meet all requirements of this article.

(f) The size, slope, alignment, materials of construction of sewers, and the methods used in excavation, placing of pipes, jointing, testing and backfilling the trench, shall all conform to the requirements of the current building and plumbing code or other applicable rules and regulations of the city. In the absence of code provision or in amplification thereof, the materials and procedures set forth in the appropriate specifications of the ASTM and W.P.C.F. Manual of Practice No. 9 shall apply.

(g) Whenever possible, the building sewer shall be brought to the building at an elevation below the basement floor. In all buildings in which any building drain is too low to permit gravity flow to the public sewer, sanitary sewage carried by such building drain shall be lifted by an approved means and discharged to the building sewer.

(h) No person shall make connection of roof downspouts, exterior foundation drains, areaway drains or other sources of surface runoff or groundwater to a building sewer or building drain which is connected directly or indirectly to a public sanitary sewer.

(i) The connection of the building sewer into the public sewer shall conform to the requirements of the building and plumbing code of the city or the procedures set forth in appropriate rules and regulations and specifications of the ASTM and the W.P.C.F. Manual of Practice No. 9. All such connections shall be made gastight and watertight. Any deviation from the prescribed procedures and materials must be approved by the administrator before installation.

(j) The applicant for a sewer permit (building or storm sewer) shall notify the administrator when such sewer is ready for inspection and connection to the public sewer. Such connection shall be made under the supervision of the administrator or the administrator's representative.

(k) All excavations for sewer installation shall be adequately guarded with barricades and lights so as to protect the public from hazard. Streets, sidewalks, parkways, and other public property disturbed in the course of the work shall be restored in a manner satisfactory to the city.

(l) Sewer pipe size shall not be less than four inches in diameter.

(m) Sewer pipe shall normally be laid in a true and straight line. When following a curve or to change direction, straight sections of the pipe shall not deviate at the joints more than four degrees from a straight line.

(n) Slope or grade of pipe shall not be less than one-eighth inch per foot with the flow generated toward the sewer main.

(o) Plastic, iron and other materials approved by the state plumbing code are acceptable as pipe materials for service line construction.

(p) All pipe joints shall be glued or gasketed in such manner to provide a watertight joint. Mortar joints are not allowed.

(q) The connection of the building sewer into the public sewer shall be made at the wye branch, if such branch is available at a suitable location. The invert of the building sewer at the point of connection shall be at least two inches higher than the invert of the public sewer. All sewer connections not made at an existing wye branch shall be made with sewer pipe saddles specifically constructed for the size and type of pipes used. Sewer connections shall be performed in the presence of the administrator or the administrator's representative.

(r) All construction shall be performed in a craftsmanship manner and be subject to the approval of the city administrator.

(s) No connection to the system will be permitted unless there is capacity available in all downstream sewers, lift stations, force mains, and the wastewater treatment plant, including the capacity for treatment of BOD,

suspended solids, nitrogen and phosphorus.

(Code 1998, § 26-114; Res. No. 134/1993, 9-24-1993; Ord. of 12-5-1995; Ord. No. 173, 6-6-2000)

Sec. 46-127. - Connection fees for new sewers.

(a) A connection capital fee (commonly referred to as a tap fee) as set by city commission resolution shall be charged for all new connections within and without the city limits. The connection capital fee (tap fee) shall be paid in full upon submission of the connection permit application, prior to the actual connection.

(b) If more than one unit is tied into the lead, each unit shall be charged the standard connection fee (i.e., a duplex living unit is charged for two units multiplied by the tap fee). A multiple unit apartment, condominium, motel, hotel or similar use shall be charged based on the number of living units multiplied by the tap fee.

(Code 1998, § 26-115; Res. No. 134/1993, 9-24-1993; Ord. of 12-5-1995)

Sec. 46-128. - Sewer service charge.

(a) The rates to be charged for sewage disposal service and treatment furnished by the system shall be levied upon each lot or parcel of land, building or premises having any sewer connection to the system, on the basis of the quantity of water used thereon or therein as the same is measured by the water meter there in use, and shall be collected at the same time and in the same manner as provided for the payment of water bills.

(b) The rates to be charged for the use of the system shall be set by city commission resolution.

(1) Each user shall pay a user charge rate for operation, maintenance and replacement (OM&R) of the system.

(2) All users shall be charged proportionate rates for OM&R based on their proportionate usage regardless of geographic location.

(3) Each user shall pay a sewer service charge for debt retirement of the treatment works.

(4) Users outside the city limits shall pay debt retirements rates three times that of users within the city.

(c) For those users whose sewage has a greater strength than normal domestic strength sewage, a surcharge in addition to the normal user charges will be collected. The surcharge for operation, maintenance, and replacement costs shall be set by city commission resolution.

(d) Billing for sewage disposal rates shall be under the supervision of the city clerk and such rates shall be included as a separate item and collected quarterly at the same time and as a part of the water bill. All bills shall be due and payable within 30 days of the billing date and if not paid by the due date a penalty as established by commission resolution shall be added. Annual notification will be provided each user by the city which details OM&R costs and debt retirement costs for the sewage system. All sewer system services provided by the city shall be paid for by the user. There will be no free service provided. Irrespective of and in addition to the amount of sewerage use, each user will receive a minimum ready-to-serve or flat bill amount representing readiness-to-serve charges for the system. The minimum flat rate shall be determined by city commission resolution. Within a reasonable time after receipt of its annual audit, the city commission will review the rates provided for in this article, in light of the audit, and will, if warranted, adjust the rates as necessary to meet the OM&R expense.

(e) For sewage disposal service furnished which is not covered by the rates referenced in this section, or miscellaneous services for which a special rate should be established, such rates shall be fixed by commission resolution.

(f) The city shall pay out of the appropriate general funds the reasonable cost and value of the services rendered by the system on the basis of the foregoing schedule of rates and amounts of water used by the several departments, agencies or instrumentalities of the city.

(g) The charges for sewer service which are under the provisions of section 21, Public Act No. 94 of 1933 (MCL 141.121), make a lien on all premises served thereby, unless notice, filed on forms provided by the city, is given

CONTINUED ON NEXT PAGE

**Run for
As Low As
\$200**

CLASSIFIEDS

**Delivered throughout
Charlevoix County Each Week!**

CALL: 989.732.8160 | EMAIL: office@CharlevoixCountyNews.com | ORDER ONLINE: www.CharlevoixCountyNews.com

SUV

2020 Chevy Equinox. AWD, 2FL, 1.5T. Lease as low as \$239 a month for 24 months with \$1,595 due at signing. Jim Wernig Chevrolet. 2401 Old 27 South, Gaylord. 989-732-5161. www.ChevyCentral.com

2020 Chevy Suburban 4x4 LT. Lease as low as \$599 a month for 36 months with \$1,595 due at signing. Jim Wernig Chevrolet. 2401 Old 27 South, Gaylord. 989-732-5161. www.ChevyCentral.com

TRAILERS

2020 Cargo Express EX Series Deluxe 6x10 S12 Cargo Trailer. Double doors. MSRP \$4,095. You Save \$1,000. SALE PRICE \$3,095. Petoskey RV. 2215 US 31 North. Petoskey. 231-347-3200.

TRUCKS

2010 Toyota Tundra Limited. Crew max, navigation, sunroof, 5.7L V-8. \$16,350. As low as \$309 a month. Jim Wernig Chevrolet. 2401 Old 27 South, Gaylord. 989-732-5161. www.ChevyCentral.com

2011 Chevy Avalanche LTZ. Sunroof, DVD. \$14,800. As low as \$280 a month. Jim Wernig Chevrolet. 2401 Old 27 South, Gaylord. 989-732-5161. www.ChevyCentral.com

2011 Ford F-150. Super crew, FX4, 5.0L V-8. \$17,900. As low as \$338 a month. Jim Wernig Chevrolet. 2401 Old 27 South, Gaylord. 989-732-5161. www.ChevyCentral.com

2011 Toyota Tacoma. Double cab, 4.0L V-6. \$20,500. As low as \$321 a

month. Jim Wernig Chevrolet. 2401 Old 27 South, Gaylord. 989-732-5161. www.ChevyCentral.com

2012 Dodge Ram 1500 Laramie Longhorn. Crew cab, navigation, sunroof. \$20,500. As low as \$391 a month. Jim Wernig Chevrolet. 2401 Old 27 South, Gaylord. 989-732-5161. www.ChevyCentral.com

2014 GMC Sierra 1500 SLE. Double cab, 5.3L V-8. \$26,380. As low as \$415 a month. Jim Wernig Chevrolet. 2401 Old 27 South, Gaylord. 989-732-5161. www.ChevyCentral.com

2015 GMC Sierra Crew Cab. Assist steps, Pwr. sunroof, Off-road suspension pkg., Heated leather seats, Rear camera, \$31,450. Dave Kring Chevy Cadillac. 1861 US 31 North, Petoskey, 231-347-2585

2016 Chevy Silverado 1500 LT. Double cab, 5.3L V-8. \$26,500. As low as \$420 a month. Jim Wernig Chevrolet. 2401 Old 27 South, Gaylord. 989-732-5161. www.ChevyCentral.com

2016 Chevy Silverado 1500 LTZ. Double cab, 6.2L V-8, max trailering. \$32,000. As low as \$502 a month. Jim Wernig Chevrolet. 2401 Old 27 South, Gaylord. 989-732-5161. www.ChevyCentral.com

2016 GMC Sierra 1500 SLT. Crew cab, sunroof. \$34,000. As low as \$532 a month. Jim Wernig Chevrolet. 2401 Old 27 South, Gaylord. 989-732-5161. www.ChevyCentral.com

2017 Chevy Silverado 1500 LT. Double cab, 4.3L V-6. \$26,000. As low as \$418 a month. Jim Wernig Chevrolet. 2401 Old 27 South, Gaylord. 989-

732-5161. www.ChevyCentral.com

2017 Chevy Silverado 1500 LT. Double cab, Z-71, 5.3L V-8. \$28,888. As low as \$457 a month. Jim Wernig Chevrolet. 2401 Old 27 South, Gaylord. 989-732-5161. www.ChevyCentral.com

2017 Honda Ridgeline RT L-T. Crew cab, navigation. \$23,200. As low as \$363 a month. Jim Wernig Chevrolet. 2401 Old 27 South, Gaylord. 989-732-5161. www.ChevyCentral.com

2018 Chevy Silverado 1500 LT. Double cab, 5.3L V-8. \$29,000. As low as \$465 a month. Jim Wernig Chevrolet. 2401 Old 27 South, Gaylord. 989-732-5161. www.ChevyCentral.com

2018 Ford F-150 XLT. Super crew, lifted, 5.0L V-8. \$36,900. As low as \$578 a month. Jim Wernig Chevrolet. 2401 Old 27 South, Gaylord. 989-732-5161. www.ChevyCentral.com

2019 Chevy Colorado 4x4 ZR2 Extended Cab. Lease as low as \$249 a month for 36 months with \$995 due at signing. Jim Wernig Chevrolet. 2401 Old 27 South, Gaylord. 989-732-5161. www.ChevyCentral.com

2019 Chevy Silverado 1500 LT. Double cab, 5.3L V-8. \$27,275. As low as \$437 a month. Jim Wernig Chevrolet. 2401 Old 27 South, Gaylord. 989-732-5161. www.ChevyCentral.com

2019 Chevy Silverado 4x4 LT Double Cab. Lease as low as \$179 a month

for 24 months with \$995 due at signing. Jim Wernig Chevrolet. 2401 Old 27 South, Gaylord. 989-732-5161. www.ChevyCentral.com

2019 Chevy Silverado 4x4 LT Double Cab. Lease as low as \$196 a month for 24 months with \$995 due at signing. Jim Wernig Chevrolet. 2401 Old 27 South, Gaylord. 989-732-5161. www.ChevyCentral.com

2019 Ford F-150 Raptor Truck. 4x4, FordPass 4G Wi-Fi hotspot, EcoBoost 3.5L V6 twin turbo 24 V, lane keeping system, 360 degree camera, voice activated touchscreen navigation, twin panel moonroof, Feeny Price \$76,000. Feeny Ford. 208 S. James, Grayling. 989-348-2791

2019 Ford F-150 XL. 4WD, tow pkg, post crash alert, rear camera, EcoBoost 2.7L V6 GTDi DOHC 24V Twin Turbo, MSRP \$39,140. Feeny Price \$30,513. Feeny Ford. 208 S. James, Grayling. 989-348-2791

2019 Ford F-150 XLT Truck. 4WD, 2.7L EcoBoost, rear camera, SYNC 3, FordPass Connect 4G Wi-Fi hotspot. MSRP \$53,415. Feeny Price \$40,685. Feeny Ford. 208 S. James, Grayling. 989-348-2791

2019 Ford F-150 XLT. 4WD, SYNC 3 with 8 touchscreens, rear camera, FordPass connect 4G Wi-Fi hotspot, navigation, heated seats, 2.7L EcoBoost, MSRP \$51,820. Feeny Price \$39,247. Feeny Ford. 208 S. James, Grayling. 989-348-2791

2019 Ford F-150 XLT. 4WD, tow pkg, navigation, SYNC 3 with 8 touchscreen, rear camera, FordPass con-

nect 4G Wi-Fi hotspot, 23 MPG Hwy. MSRP \$57,260. Feeny Price \$44,213. Feeny Ford. 208 S. James, Grayling. 989-348-2791

2019 Ford F-150 XLT. 4x4, FordPass 4G Wi-Fi hotspot, 2.7L EcoBoost, Pure Michigan edition, rear camera, pre-collision assist, SYNC 3, post crash alert. MSRP \$51,745. Feeny Price \$40,700. Feeny Ford. 208 S. James, Grayling. 989-348-2791

2019 Ford F-150 XLT. Remote start, heated seats, navigation, 4WD, EcoBoost 2.7L V6 GTDi DOHC 24V Twin Turbo, tow pkg, trailer sway control, FordPass connect 4D Wi-Fi hotspot, MSRP \$51,820. Feeny Price \$39,239. Feeny Ford. 208 S. James, Grayling. 989-348-2791

2019 Ford F-350SD Lariat. 4x4, 6.7 Power Stroke 6.7L V8 DI 32V OHV Turbodiesel, Twin sunroof, heated seats, navigation, rear camera, leather, 5th Wheel/Gooseneck Hitch Prep pkg, Snow Plow/Camper pkg, security system, wireless phone. MSRP \$75,355. Feeny Price \$8,926. Feeny Ford. 208 S. James, Grayling. 989-348-2791

2012 Buick Enclave Premium. AWD, navigation, sunroof. \$13,700. As low as \$259 a month. Jim Wernig Chevrolet. 2401 Old 27 South, Gaylord. 989-732-5161. www.ChevyCentral.com

2010 Ford Transit Van. Front bucket seats, Cargo area vinyl flooring, 180 degree rear cargo doors. \$7,450. Dave Kring Chevy Cadillac. 1861 US 31 North, Petoskey, 231-347-2585

2012 Buick Enclave Premium. AWD, navigation, sunroof. \$13,700. As low as \$259 a month. Jim Wernig Chevrolet. 2401 Old 27 South, Gaylord. 989-732-5161. www.ChevyCentral.com

2010 Ford Transit Van. Front bucket seats, Cargo area vinyl flooring, 180 degree rear cargo doors. \$7,450. Dave Kring Chevy Cadillac. 1861 US 31 North, Petoskey, 231-347-2585

2020 Ford Transit Connect XL. Blind spot sensor, lane departure, rear camera, SYNC 3, tow pkg, 3rd row seats. MSRP \$32,110. SAVE \$2,124. Feeny Price \$29,986. Feeny Ford. 208 S. James, Grayling. 989-348-2791

WANTED

WANTED TO BUY. Baseball, football, basketball cards before 1970. Paying cash. 231-373-0842. 989-569-1201 Tawas area

WANTED: OLD GUITARS. Guitar collector will pay cash for Old Fender, Martin, Gibson & more USA made guitars. Call Tony: 517-323-9848

Subscribe

to the Charlevoix County News
Distributed to Boyne City, East Jordan, Charlevoix,
Boyer Falls, Walloon Lake, Ellsworth and Ahwoud.

friendly & positive

news and sports covering all of
Charlevoix County

PUBLISHED WEEKLY
ON THURSDAY

County News

Call: 989-732-8160

Fax: 888-854-7441

E-Mail: Office@CharlevoixCountyNews.com

www.CharlevoixCountyNews.com

that a tenant is responsible, are hereby recognized to constitute such lien and whenever any such charge against any piece of property shall be delinquent for six months, the city clerk shall proceed in placing said lien on the tax roll for collection pursuant to the collection of water liens as designated by section 46-77(c).

(h) In addition to other remedies provided, the city shall have the right to shut off and discontinue the supply of water to any premises for the nonpayment of sewage disposal rates, when payment is not made within 30 days of due date.

(i) No discount or bill adjustment for sewer use shall be made for irrigation uses unless the user purchases and maintains a separate water meter specifically installed for irrigation.

(Code 1998, § 26-116; Res. No. 134/1993, 9-24-1993; Ord. of 12-5-1995)

Sec. 46-129. - Use of public sewer.

(a) No person shall discharge or cause to be discharged any waters or sewage into the city system that will cause violation of the city's groundwater discharge permit.

(b) No person shall discharge or cause to be discharged any stormwater, surface water, groundwater, roof runoff, subsurface drainage, uncontaminated cooling water, or unpolluted industrial process waters to any sanitary sewer.

(c) Stormwater and all other unpolluted drainage shall be discharged to such sewers as are specifically designated as storm sewers, or to a natural outlet approved by the administrator. Industrial cooling water or unpolluted process waters may be discharged, upon approval of the administrator, to a storm sewer or natural outlet.

(d) No person shall discharge or cause to be discharged any of the following described waters or wastes to any public sewers:

(1) Any gasoline, naphtha, fuel oil, kerosene, toluene, xylene, ethers, alcohols, ketones, aldehydes, peroxides, chlorates, perchlorates, bromates, carbides, hydrides, stoddard solvents, sulfides or other flammable or explosive solid, liquid or gas.

(2) Any waters or wastes containing toxic or poisonous solids, liquids, or gases in such quality, either singly or by interaction with other wastes, to injure or interfere with any sewage treatment process, constitute a hazard to humans or animals, create a public nuisance, or create any hazard in the receiving waters of the sewage treatment plant. Toxic waters and wastes prohibitions will be consistent with the provisions of section 307(a) of the Clean Water Act.

(3) Any waters or wastes having a pH lower than 6.0 or higher than 9.0, or having any other corrosive property capable of causing damage or hazard to any structures, equipment, and personnel of the sewage works.

(4) Solid or viscous substances in quantities or of such size capable of causing obstruction to the flow in sewers, or other interference with the proper operation of the sewage works, such as, but not limited to, ashes, cinders, sand, mud, straw, shavings, metal, glass, rags, feathers, tar, plastic, wood, unground garbage, whole blood, paunch manure, hair and fleshings, entrails, and paper dishes, cups, milk containers, etc., either whole or ground by garbage grinders. Blockages or interferences in the flow of the main lines found to be caused from laterals will result in the property owner being charged an additional fee adopted by City Commission.

(5) Any waters or sewage containing substances at concentrations greater than those listed on the federal categorical pretreatment standards for a particular subcategory. If the federal standard is more stringent than limitations proposed under this article for sources in that subcategory, the federal standards shall immediately supersede the limitations imposed under this article. The administrator shall notify all affected users of the applicable reporting requirements under 40 CFR 403.12.

(e) No person shall discharge or cause to be discharged the following described substances, materials, waters, or wastes if it appears likely in the opinion of the administrator that such wastes can harm either the sewers, sewage treatment process or equipment, have an adverse effect on the receiving stream, or can otherwise endanger life, limb, public property or constitute a nuisance. In forming an opinion as to the acceptability of these wastes, the administrator will give consideration to such factors as quantities of the subject wastes in relation to flows and velocities of flow in the sewers, materials of construction of the sewers, nature of the sewage treatment process, degree of treatability of wastes in the sewage treat-

ment plant, and other pertinent factors, as listed below:

(1) Any liquid or vapor having a temperature higher than 150 degrees Fahrenheit (65 degrees centigrade).

(2) Any water or waste containing fats, wax, grease or oils, whether emulsified or not, in excess of 100 ppm; or containing substances which may solidify or become viscous at temperatures between 32 degrees Fahrenheit and 150 degrees Fahrenheit.

(3) Any garbage that has not been properly shredded. The installation and operation of any garbage grinder equipped with a motor three-fourths horsepower or greater shall be subject to review and approval of the administrator.

(4) Any waters or wastes containing strong acid, iron pickling wastes, or concentrated plating solutions whether neutralized or not.

(5) Any waters or wastes containing phenols or other taste or odor producing substances, in such concentrations exceeding the limits which may be established by the administrator as necessary, after treatment of the composite sewage, to meet the requirements of state, federal or other public agencies of jurisdiction for such discharge to the receiving water.

(6) Any radioactive wastes or isotopes of such half-life or concentration as may exceed the limits established by the administrator in compliance with state or federal regulations.

(7) Materials which exert or cause:

a. Unusual concentrations of inert suspended solids, such as, but not limited to, fuller's earth, Lime slurries and lime residues, or of dissolved solids, such as, but not limited to, sodium chloride and sodium sulfate.

b. Excessive discoloration, such as, but not limited to, dye wastes, vegetable tanning solutions.

c. Unusual volume of flow or concentration of wastes constituting "slug" as defined herein.

(8) Waters or wastes containing substance which are not amenable to treatment or reduction by the sewage treatment processes employed, or are amenable to treatment only to such degree that the sewage treatment plant effluent cannot meet the requirements of other agencies having jurisdiction over discharge to receiving waters.

(9) Pollutant limitations on wastewater discharges based on 24-hour composite sample:

Pollutant	Limit in mg/l
Arsenic	0.20
BOD5	300
Cadmium	0.022
COD	600
Copper	0.17
Cyanide	0.25
Mercury	0.0002
Nickel	0.3
Nitrogen-total	40
Oil, grease	100
Phenol	0.5
Phosphorous	10
Sodium	150
Suspended solids	280
Total chromium	5.0
Zinc	0.87
Lead	0.47
Silver	0.091

(f) Discharged waters or wastes.

(1) If any waters or wastes are discharged, or are proposed to be discharged to the public sewers, which waters contain the substances or possess the characteristics enumerated in the subsections (d) and (e) of this section, and which in the judgement of the administrator, may have a deleterious effect in any way upon the sewage works, processes, equipment, or receiving waters, or which otherwise create a hazard to life or constitute a public nuisance, the administrator may:

- Reject the wastes.
- Require pretreatment to an acceptable condition for discharge to the public sewers.
- Require control over the quantities and rates of discharge.
- Require payment to cover the added cost of handling and treating the wastes not covered by existing taxes, sewer charges, under the provisions of this section. Blockages or interferences in the flow of the main lines found to be

caused from laterals will result in the property owner being charged an additional fee adopted by City Commission.

(2) If pretreatment is required by the administrator, the owner shall provide, at his expense, such treatment facilities to meet all state, local, and federal regulations including those as set forth in this article. The pretreatment provision included in this section are to ensure that the user will consistently provide for the reduction in the amount of a pollutant in the effluent to a less toxic or harmless state.

(3) If the administrator permits the pretreatment or equalization of waste flows, the design and installation of the plants and equipment shall be subject to the review and approval of the administrator, and the requirements of all applicable codes, ordinances and laws.

(g) Grease, oil and sand interceptors.

(1) Grease, oil and sand interceptors shall be provided when, in the opinion of the administrator, they are necessary for the proper handling of liquid wastes containing grease in excessive amounts, or any flammable wastes, sand or other harmful ingredients, except that such interceptors shall not be required for private living quarters or dwelling units. All interceptors shall be of a type and capacity approved by the administrator, and shall be located as to be readily and easily accessible for cleaning and inspection.

(2) Grease and oil interceptors shall be constructed of impervious materials capable of withstanding abrupt and extreme changes in temperature. They shall be of substantial construction, watertight, and equipped with easily removable covers which when bolted in place shall be gastight and watertight.

(h) Where installed, all grease, oil and sand interceptors shall be maintained by the owner, at his expense, in continuously efficient operation at all times.

(i) Provision for spill containment equal to 150 percent of storage shall be provided when hazardous or toxic materials are stored. Approval of storage facilities shall be made by the administrator prior to usage and shall provide adequate means to prevent the materials from entering the wastewater system. A written procedure for handling spillage may be required by the administrator as he deems necessary.

(j) Where preliminary treatment or flow equalizing facilities are provided for any waters or wastes, they shall be maintained continuously in satisfactory and effective operation at the owner's expense.

(k) When required by the administrator, the owner of any property serviced by a building sewer carrying industrial wastes shall install a suitable control manhole together with such necessary meters and other appurtenances in the building sewer to facilitate observation sampling and measurement of all wastes. Such manhole, when required, shall be accessibly and safely located, and shall be constructed in accordance with plans approved by the administrator. The manhole shall be installed by the owner at the owner's expense, and shall be maintained by the owner so as to be safe and accessible at all times.

(l) Water and waste standards.

(1) All measurements, tests, and analyses of the characteristics of waters and wastes to which reference is made in this article shall be determined in accordance with the latest edition of Standard Methods for the Examination of Water and Wastewater, and shall be determined at the control manhole provided for, or upon suitable samples taken at the control manhole. If no special manhole has been required, the control manhole shall be considered to be the nearest downstream manhole in the public sewer to the point at which the building sewer is connected.

(2) Sampling shall be carried out by customarily accepted methods to reflect the effect of constituents upon the sewage works and to determine the existence of hazards to life, limb, and property. The particular analyses involved will determine whether a 24-hour composite of all outfalls of a premise is appropriate or whether grab sample or samples should be taken.

(m) No statement contained in this article shall be construed as preventing any special agreement or arrangement between the city and any industrial concern whereby an industrial waste of unusual strength or character may be accepted by the city for treatment, subject to payment therefor, by the industrial concern.

(n) The provisions of this section shall be applicable to all sewers and drains which are connected to or become a part of the city's sewage works through agreements or connections with other governmental entities

yond the city limits. Such areas or governmental units shall provide for the administration of the permits required and inspections by the city.

(Code 1998, § 26-117; Ord. of 12-5-1995)

Sec. 46-130. - Septic tank sewage.

(a) Septic tank sewage may be delivered to the sewage treatment plant for disposition only if the plant is currently registered as a Septage Receiving Facility with the State of Michigan.

(b) The charge for the treatment of the septic tank sewage will be such amounts that the city may from time to time determine and establish by separate resolution. The OM&R portion of this fee shall be based on the actual cost to treat such sewage taking into consideration the concentration of the sewage.

(c) The receipt of septic tank sewage for treatment at the sewage treatment plant shall be carried on only to the extent deemed practicable by the city taking into consideration the capacity of the system.

(Code 1998, § 26-118; Ord. of 12-5-1995)

Sec. 46-131. - Storm drains and connections.

(a) No unauthorized person shall uncover, make any connection with or opening into, use, alter or disturb any storm sewer or appurtenance thereof without first obtaining a written permit from the administrator.

(b) All costs and expense incident to the installation and connection to the storm drain shall be borne by the property owner.

(c) Plans for all connections to the storm drain shall be submitted to the administrator before construction is undertaken.

(Code 1998, § 26-119; Ord. of 12-5-1995)

Sec. 46-132. - Powers and authority of inspectors.

The administrator and other duly authorized employees of the city bearing proper credentials and identification shall be permitted to enter upon all properties for the purpose of inspection, observation, measurement, sampling, and testing in accordance with the provisions of this article.

(Code 1998, § 26-120; Ord. of 12-5-1995)

Secs. 46-133 -Sec. 46-27. - Supervisor appointed; duties.

(a) The management and supervision of the city sewer utility service shall be vested in the city administrator or the administrator's designee.

(b) The administrator shall have charge of all public sewer utility service property, entire control of its operation and maintenance, supervision over all its employees, supervision over all additions, alterations, repairs, and the laying and construction of all mains as well as perform all other duties required of the administrator by the city commission; provided, however, the administrator shall not have authority to make or obligate the city to pay for any repairs, improvements, or purchase unless first approved by the city commission through the annual budget process.

(Comp. Ords. 1985, §§ 26.001, 26.002; Code 1998, § 26-26; Ord. of 12-5-1995)

Sec. 46-134 - Appeal of city administrator's decision to city commission.

(a) In the event of a decision unfavorable to the owner on the owner's appeal to the city administrator claiming good cause not to be held liable, the owner may then within 15 business days appeal to the city commission to consider the owner's liability.

(b) The city commission shall consider whether or not to hear that appeal and if the city commission decides to hear the appeal, it may, for good cause, adjust the owner's liability.

(Code 1998, § 26-55.2; Ord. No. 181, 3-5-2002; Ord. No. 202, 6-19-2007)

46.135—46.162. - Reserved.

Publication: This Ordinance will take effect 7 days after publication.

Date: 11-19-2019

Cheltzi M. Wilson, MMC

City Clerk

ROLL CALL VOTE:

AYES: PENZIEN, JOHNSON, SHERMAN, HAWLEY, TIMMONS, REID, AND PECK

NAYS: NONE

ABSENT: NONE

ABSTAIN: NONE

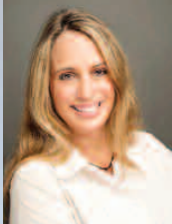
ADOPTED: NOVEMBER 19, 2019

PUBLISHED: NOVEMBER 27, 2019

EFFECTIVE: DECEMBER 4, 2019

REAL ESTATE CORNER

BROUGHT TO YOU BY
HOLLY STARK
EXP REAL ESTATE



10 benefits of buying at the end of the year

The end of the year is a great time for renters to become homeowners, growing families to move to more accommodating homes, and baby boomers to find houses that fit their evolving lifestyles.

Benefits to buying at the end of the year include:

Tax savings. Closing on your new home by Dec. 31 means you can deduct mortgage interest, property taxes and points on your loan on your income tax return. You can also deduct the interest costs associated with a home equity loan. These deductions are significant, especially in the early years of your loan when you are paying off so much interest.

Sellers might be more motivated. Many sellers will also be anxious to sell by the end of the year so that they, too, can enjoy tax savings on the next home they purchase. That means you may have more leverage during negotiations and they may be willing to accept lower than their listing price. However, if you're in a strong seller's market, you'll want to be conservative -- and always heed the advice of your real estate professional.

If you're buying a new house, there's a good chance builders will be offering incentives. Many builders will throw in nice little extras to sell as many houses as they can by the end of the year.

Generally speaking, your housing choices during the fall are still healthy. By December there are traditionally fewer houses on the market. October and November are great months to go house hunting.

It's easier to move. Many moving companies are

booked six or so weeks in advance during the busy summer months. In the fall and winter it's normally easier to secure the services of a moving company or rental equipment on shorter notice.

A new home for the holidays. The holiday season is a great time to celebrate your new home with family and friends.

In addition, you'll enjoy the many benefits that come with homeownership, regardless of what time of year you buy, including:

Paying toward something you own. If you're renting, your rent payment goes toward something that will last you a month -- a place to live for 30 or so days. When you buy a house, your monthly mortgage payment goes toward something you own.

Consistent payments. Landlords have the discretion to increase your rent, plus it's exposed to inflation. Once you secure a mortgage, you can rely on consistent payments (if you have a fixed-rate mortgage).

A place to make your own. When you own your house, you can update your kitchen, paint your home's exterior in any color you choose, change your fixtures, and replace your carpeting -- all with the knowledge that the changes you make are your own.

Gaining equity. In the beginning, most of your payment goes toward interest. But gradually more will go toward paying off your principal, meaning you build up equity -- or savings -- in your home. Another factor in equity is appreciation. As home values go up in your area, so too does your rate of equity.

Real Estate Feature Property SHARP RANCH HOME ON NEARLY TWO-AND-A-HALF ACRES NEAR GAYLORD



BY JIM AKANS

Situated on just under two-and-a-half acres, this sharp, ranch-style home with a pole barn is just a few miles from downtown Gaylord.

This four bedroom, two bath home has approximately 1,404 square feet of

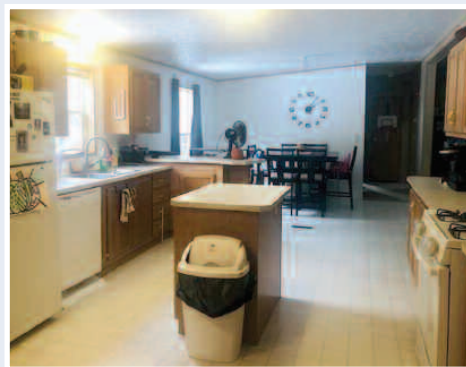
nicely designed living space. Highlights include a large living room with vaulted ceiling, spacious kitchen and adjoining dining area that also have a vaulted ceiling. The kitchen includes a handy center preparation island.

A 32x32 foot pole building on the property has a concrete floor and space for ve-

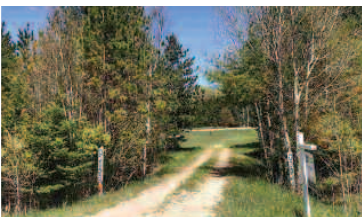
hicles as well as a work-space with plenty of room left over for storage. This home is near Manuka Lake, close to Otsego Lake and the northern Lower Michigan vast network of snowmobile trails.

This sharp, ranch style home on nearly two-and-a-half acres is located at 4784 Hideaway Lane a few miles

southwest of Gaylord and it is listed at just \$110,000. For additional information or to arrange for a tour, please call Mike Stark or Holly Stark, Associate Brokers at EXP Realty -- 100 Main Street, Suite D, East Jordan, at 231-536-7700 or email HollysUpNorth@gmail.com

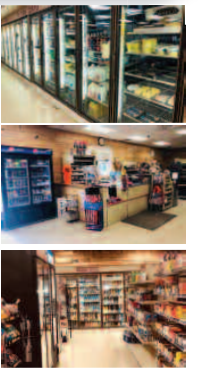
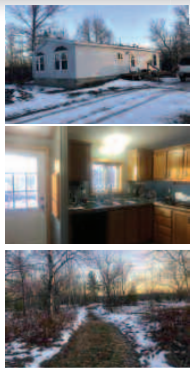


VACANT LAND PARCELS LOCATED ON US131



Location, Location, Location!! These lots are located right across from Boyne Mountain... Great location to build your dream home! This location is close to all that Boyne Mountain has to offer, skiing, golfing, waterpark and great proximity to Lake Charlevoix too!

starting at only \$25,000



NEW LISTING! 6075 LITTLE STUMP TRAIL • GAYLORD

Privacy and Paradise!! Great location close to downtown Gaylord yet outside of town nestled on 10 acres with berries galore and room to run or hunt!! Conveniently located close to the new EJ plant and not far from Boyne Mountain or I75. This home boast 2 bedrooms 2baths with a full basement and open floor plan. Great patio for entertaining and a fire pit set up for those fall nights. Call today don't let this one get away! MLS #460856. **\$89,900**

NEW LISTING! 1709 MORRIS ROAD • EAST JORDAN

Heavily wooded property close to state land and snow mobile trails. There is a structure for storing your toys. Great little place to come together away from it all. MLS #460769. **\$10,000**

PRICE REDUCED!!!! 6508 CENTER STREET • ELLSWORTH

Investors, entrepreneurs, don't pass this large commercial building up. Located in the heart of Ellsworth. So many possibilities split the building up and rent it out for multiple businesses... Would be a great space for an indoor daycare or a yoga studio... what about a boatrental, room for kayaks. Or the handyman could turn this into apartments. For the investor shine it up and rent all the spaces and watch your investment grow. MLS #459037. **\$60,000**



Pine Valley Association - Lots Available



Land Contract terms with low down payments, 1.5 Miles of Recreational Trail around development, 7+Acres of Natural Open Space with Pond for Common Use, County Maintained Roads, Minimum Sq Footage: 1,500 SQFT, Builder of Choice/ School of Choice, Surrounded by acres of conservancy and school property, Adjacent to Boyne Mountain and Centrally located between Boyne City, Petoskey and Gaylord. Very close drive to the new EJ Factory in Elmira.

Lot pricing starting at only \$28,900



We are adding to our sales force.

EXP Realty is growing and we need solid professionals to serve customers in the Charlevoix County and surrounding area.

Contact Holly Stark for details.



HOLLY STARK
CELL: 231-675-3105



MIKE STARK
CELL: 231-357-2347